

2006/07 Ontario ACT Data Outcome Monitoring Report

**Ontario Technical Advisory Panel
Ministry of Health and Long-Term Care
February 2008**

ACT Designated Population

ACT is for clients who have:

Persistent symptoms of serious mental illness.

- Frequent and long term hospitalizations.
- Serious functional impairments affecting activities of daily living, work, and housing.
- Inability to meet survival needs.

And clients with:

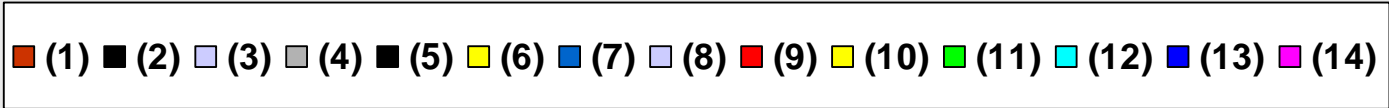
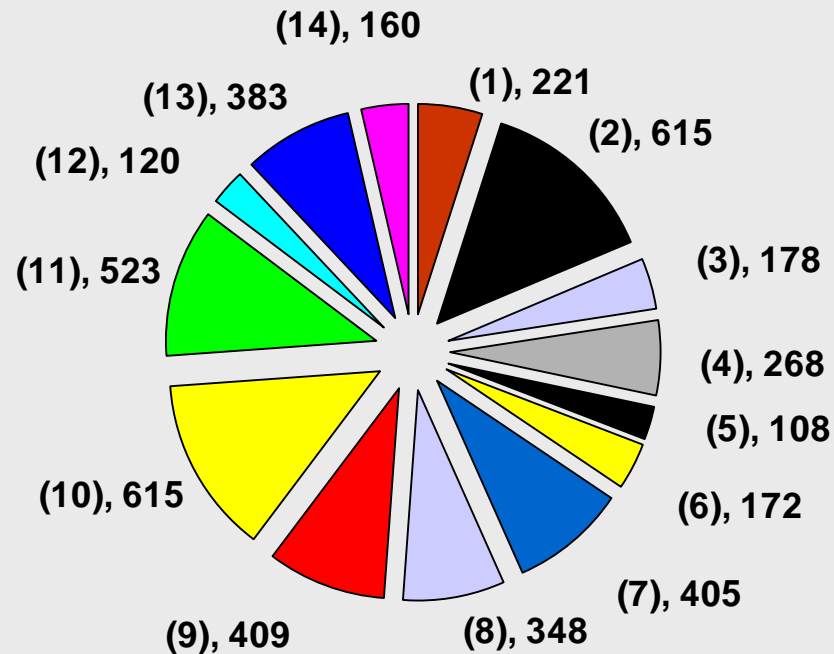
Coexisting substance abuse disorder.

- History of involvement in the criminal justice system or at high risk of involvement.

LHIN Numbers and LHIN Names

LHIN #	LHIN Name
1	Erie St.Clair
2	South West
3	Waterloo Wellington
4	Hamilton Niagara Haldimand Brant
5	Central West
6	Mississauga Halton
7	Toronto Central
8	Central
9	Central East
10	South East
11	Champlain
12	North Simcoe Muskoka
13	North East
14	North West

Distribution of ACT Clients By LHIN



Data from 72 teams with 4525 clients as of March 31, 2007

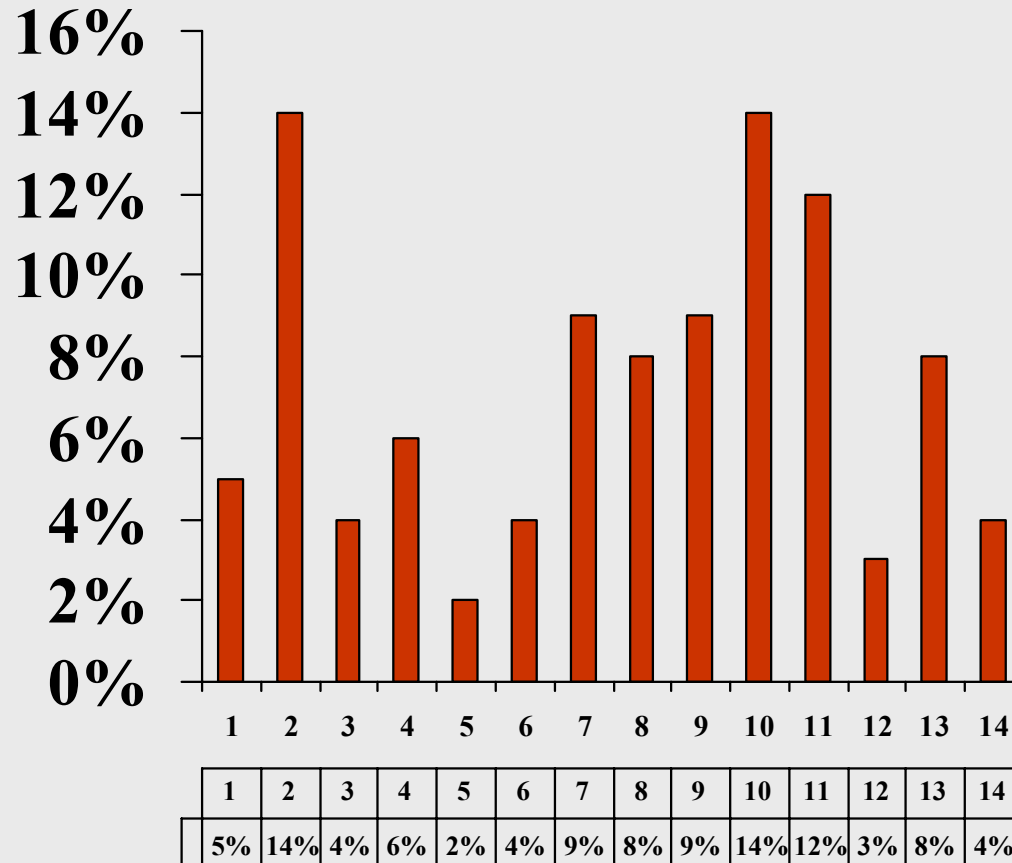
Summary Distribution of ACT Clients By LHIN

LHIN	1	2	3	4	5	6	7	8	9	10	11	12	13	14	Prov
# of Reg. Clients	221	615	178	268	108	172	405	348	409	615	523	120	383	160	4525
% of Provincial Caseload	5%	14%	4%	6%	2%	4%	9%	8%	9%	14%	12%	3%	8%	4%	100%

Summary of Team Caseloads by LHIN

LHIN	1	2	3	4	5	6	7	8	9	10	11	12	13	14	Prov
# of Reg. Clients	221	615	178	268	108	172	405	348	409	615	523	120	383	160	4525
# Teams Reporting	3	9	4	5	2	3	5	6	7	7	8	3	7	3	72
Average # of clients per Team	74	68	45	54	54	57	81	58	58	88	65	40	55	53	63
Lowest # of Clients per Team	61	45	26	28	22	3	21	4	18	49	17	10	39	48	3
Highest # of Clients per Team	81	94	74	71	86	89	122	91	91	156	93	64	66	61	156

Share of New Clients by LHIN Ontario ACT Teams



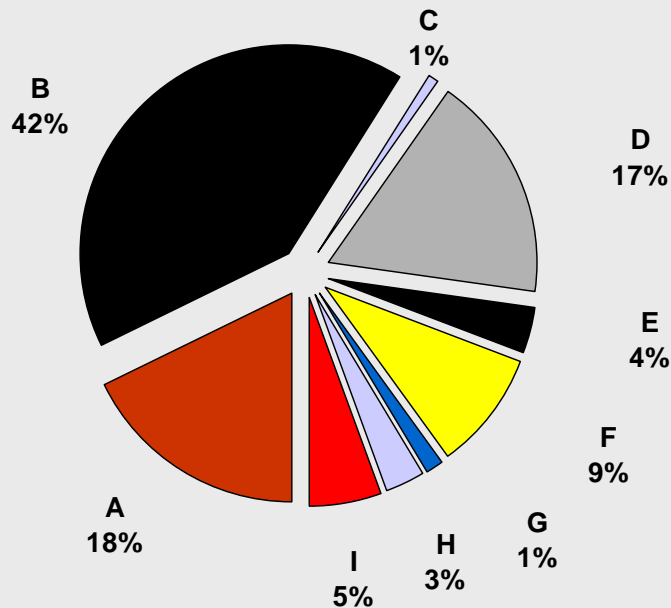
Data from 72 teams as March 31, 2007
 924 new clients of 4525 in ACT programs in 2006/07

Summary of New Admissions by LHIN

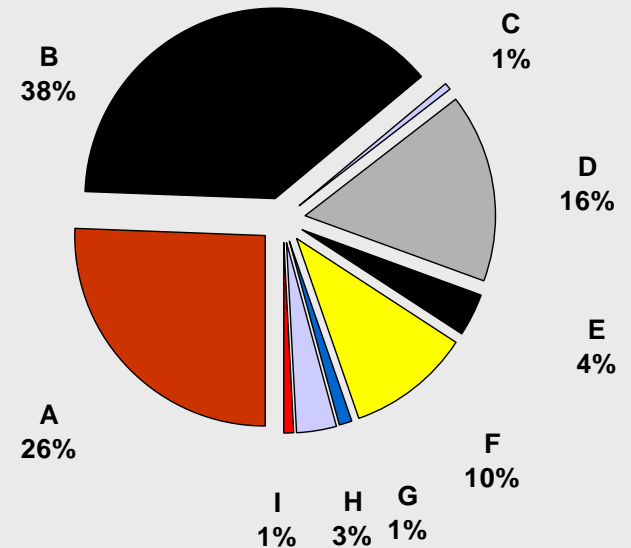
LHIN	1	2	3	4	5	6	7	8	9	10	11	12	13	14	Prov
New Clients past 12 months	23	144	69	81	31	16	41	71	79	126	111	61	52	19	924
# Teams Reporting	3	9	4	5	2	3	5	6	7	7	8	3	7	3	72
Avg. annual # new clients by Team	8	16	17	16	16	5	8	12	11	18	14	20	7	6	13

Referral Sources for Ontario ACT

72 teams as of March 31, 2007
N= 2589 Service Recipients

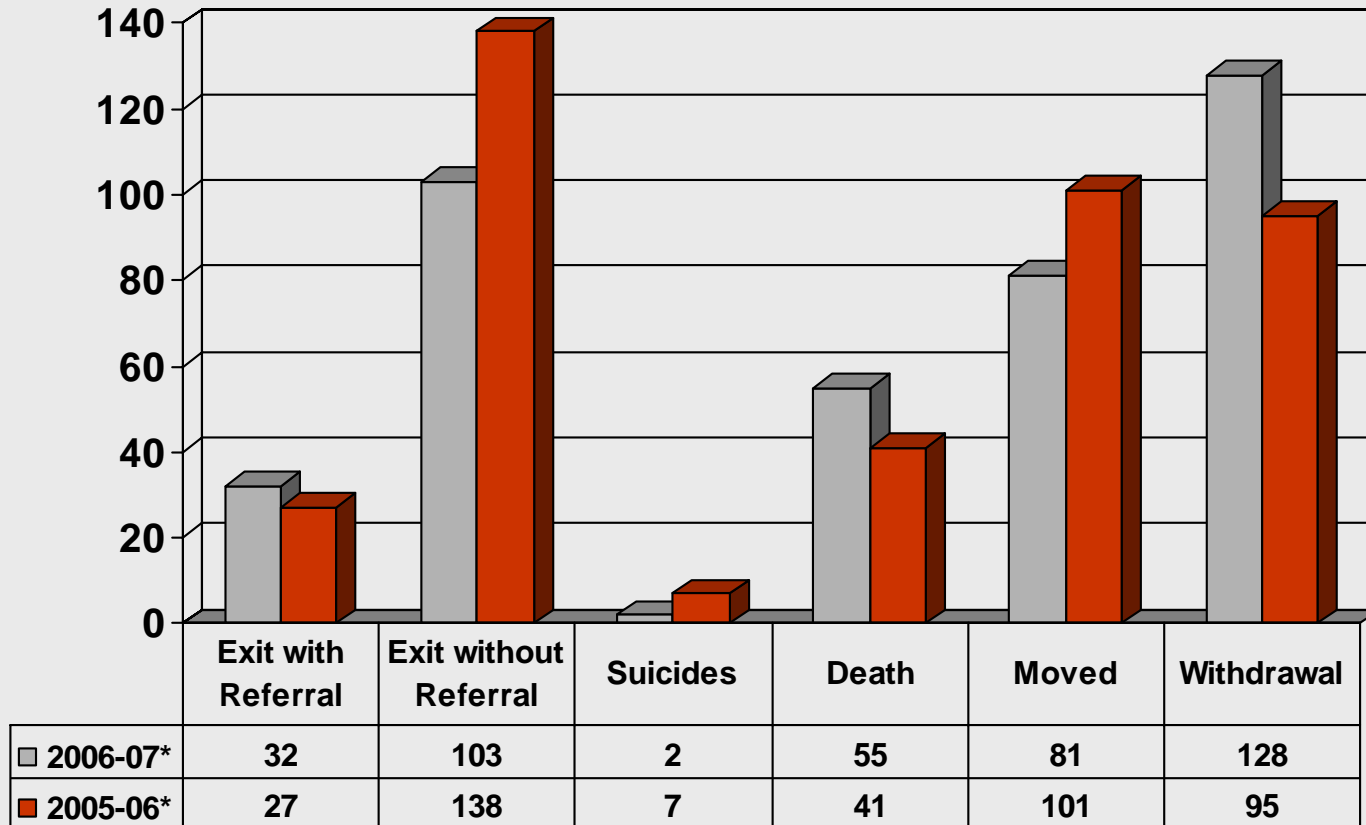


64 teams as of March 31, 2006
N= 2580 Service Recipients



- A General Hospital
- B Psychiatric / Specialty Hospital
- C Other Institution
- D Community Mental Health Organizations
- E Other Community Organizations
- F Professionals (MDs, Psychiatrist, Mental Health Worker.)
- G Criminal Justice System
- H Self, Family or friend
- I Other

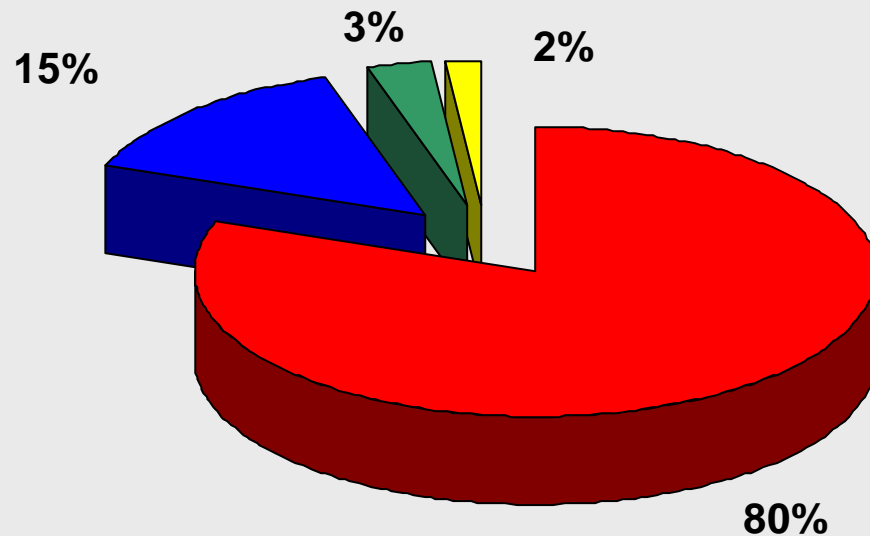
Exit Disposition From ACT



Data from 72 teams as March 31, 2007

401 of 4525 (9%) clients discharged from ACT programs in 2006/07
 409 of 4048 (10%) clients discharged from ACT programs in 2005/06

Target Population ACT Clients By Diagnosis

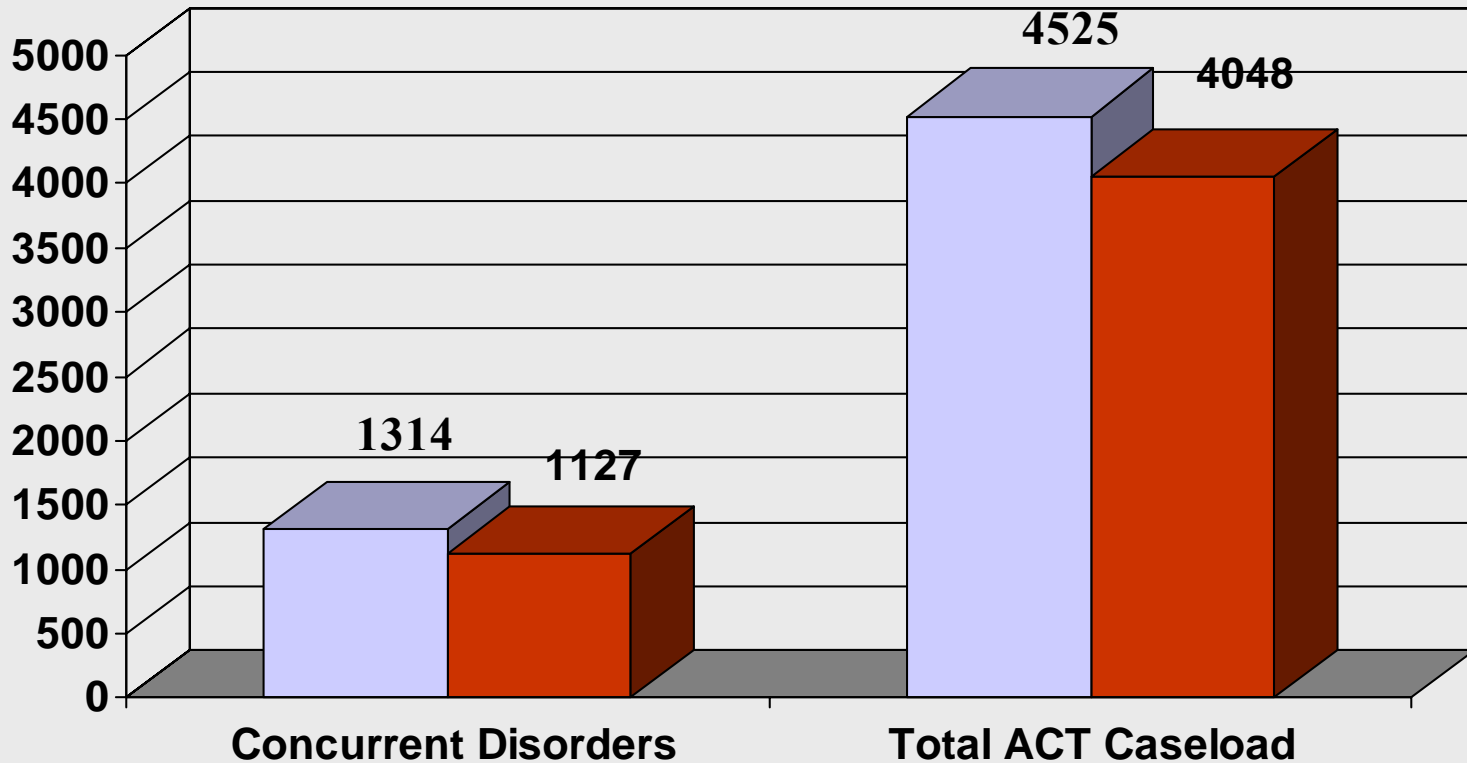


■ Schizophrenia ■ Mood Disorder ■ Other ■ Personality Disorder

N= 4579 Service Recipients

Schizophrenia is defined as all schizophrenia spectrum disorders including schizoaffective disorders.

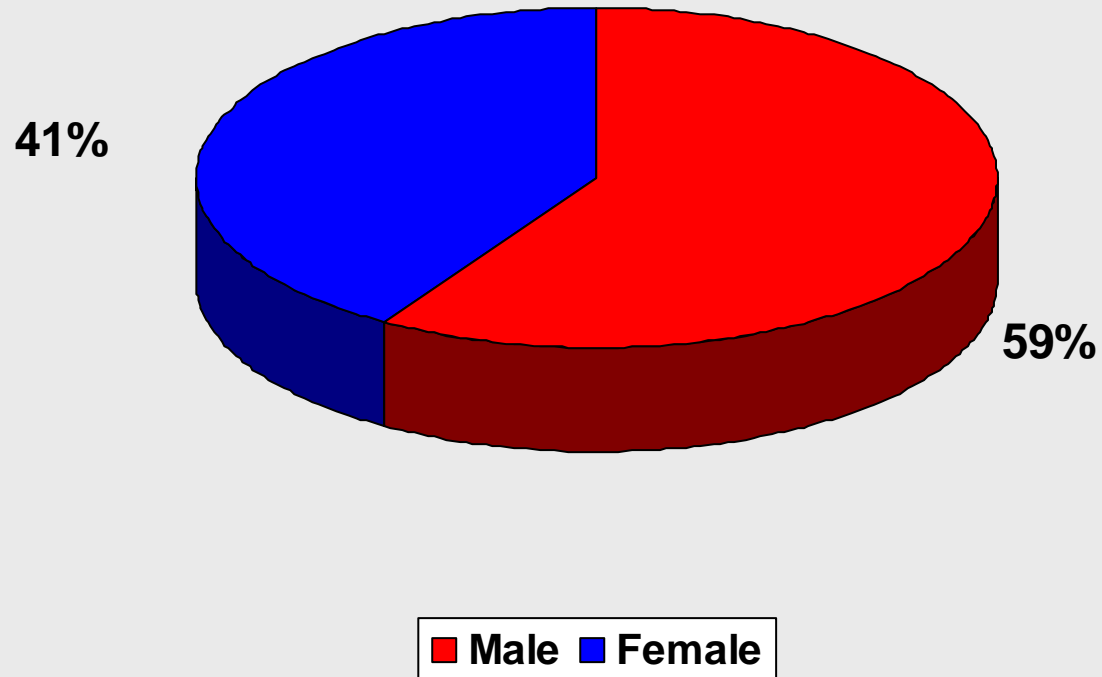
Prevalence of ACT Clients with Concurrent Disorders



06/07	05/06
1314	1127
29%	28%

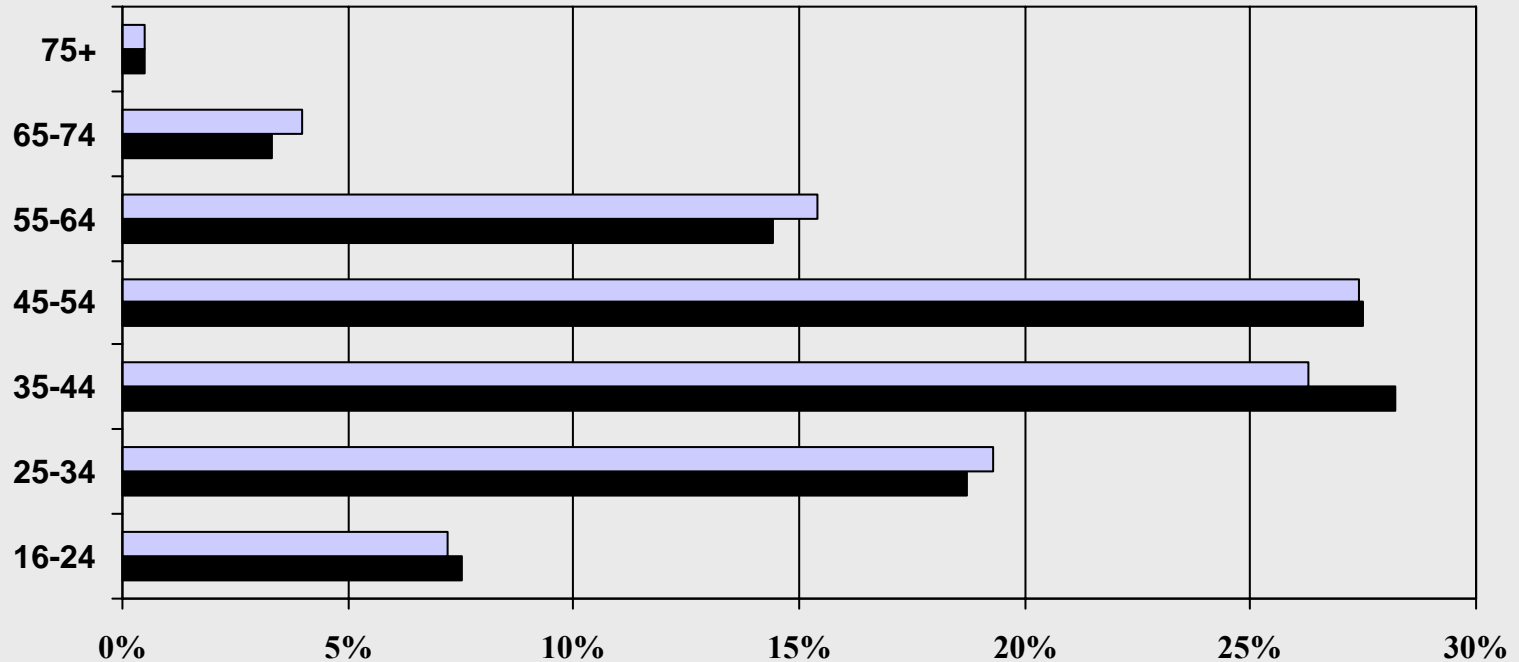
06/07	05/06
4525	4048

Gender of ACT Clients



N= 4687 Service Recipients

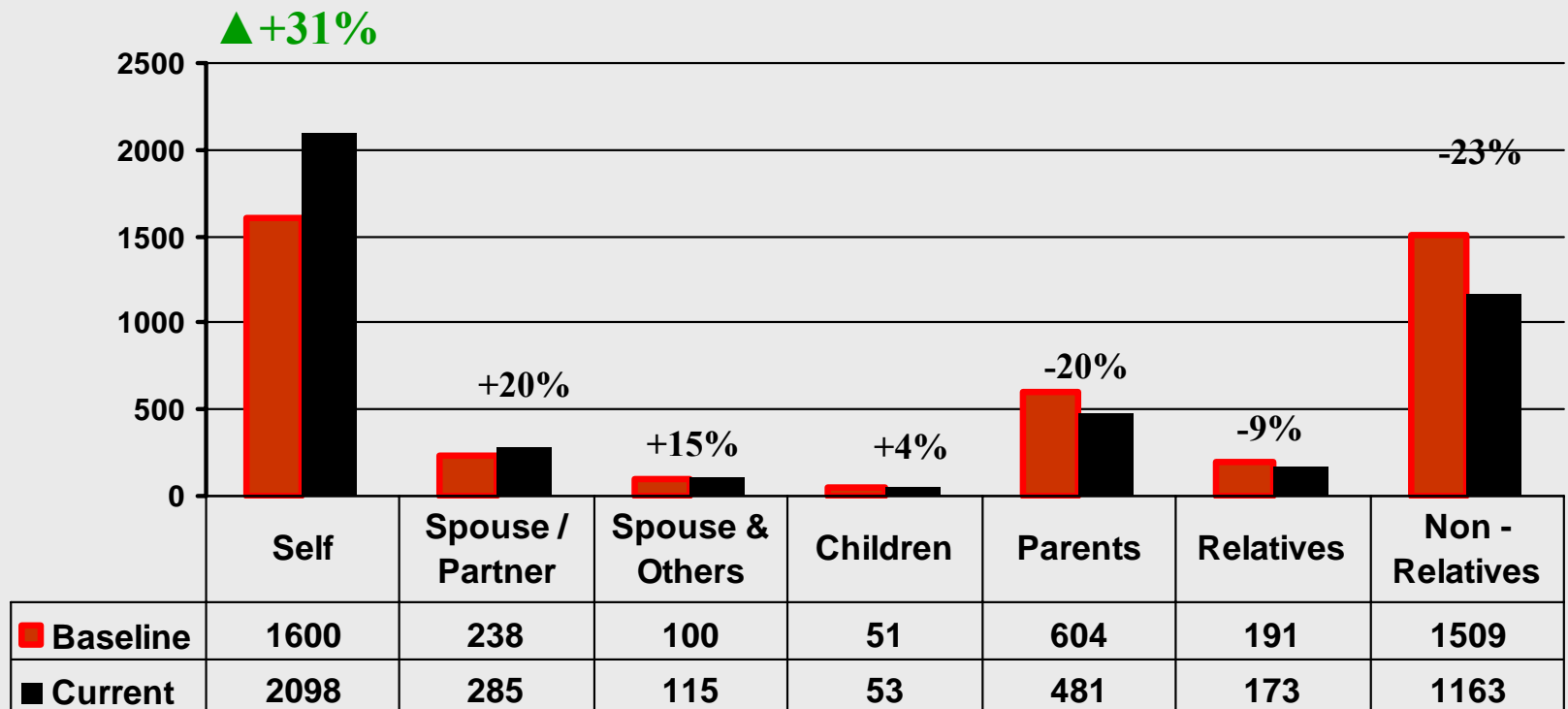
Percentage of ACT Clients By Age



	16-24	25-34	35-44	45-54	55-64	65-74	75+
2006-07	7.20%	19.30%	26.30%	27.40%	15.40%	4.00%	0.50%
2005-06	7.50%	18.70%	28.20%	27.50%	14.40%	3.30%	0.50%

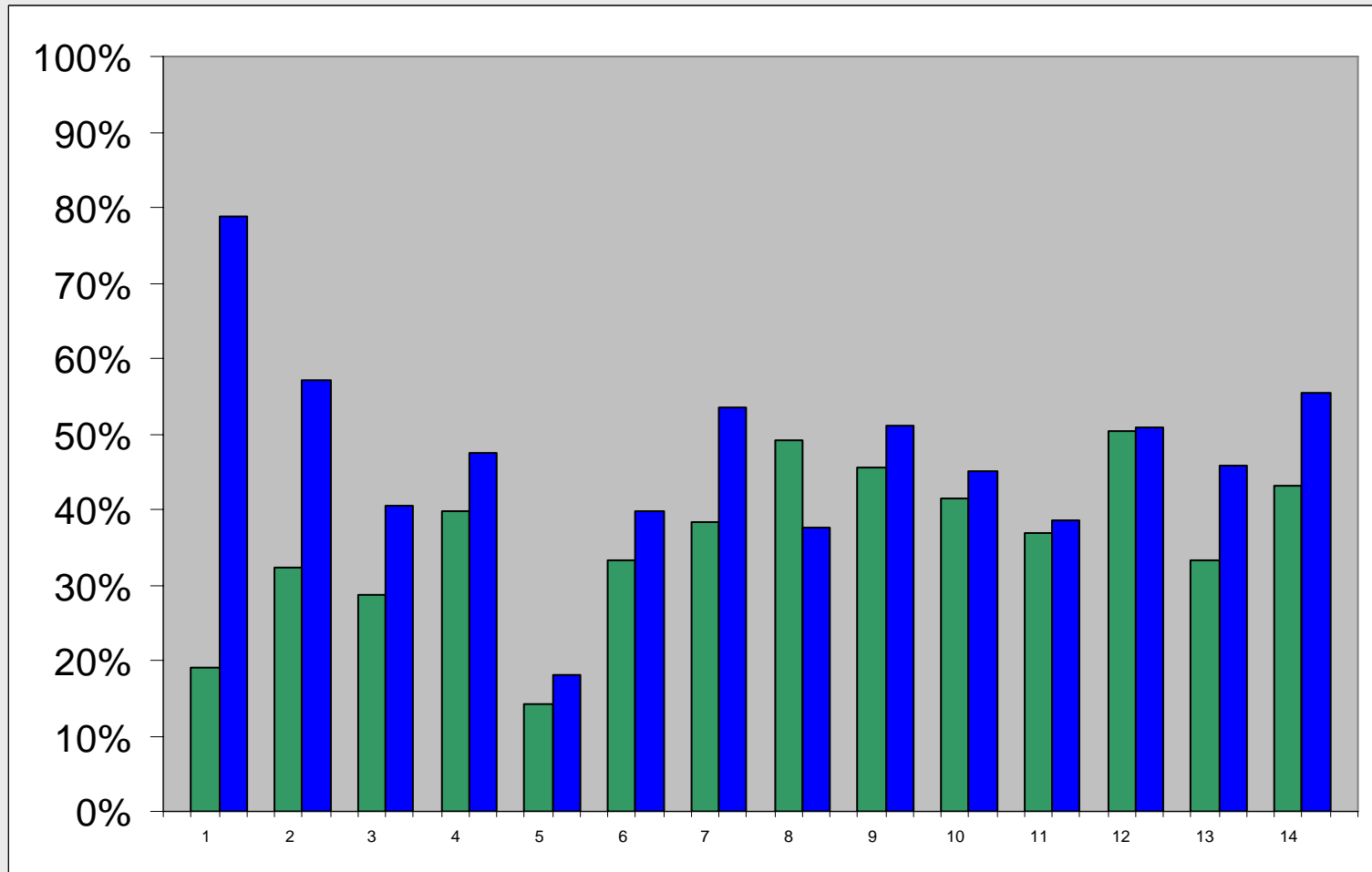
	16-24	25-34	35-44	45-54	55-64	65-74	75+
2006-07	338	906	1237	1290	724	186	22
2005-06	307	769	1162	1130	593	136	19

Changes in Client Living Arrangements Since Admission



Children defined as Service Recipient lives with parents & other family, but not spouse or partner








Changes in Self - Living Arrangement Since Admission by LHIN Baseline to Current


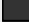


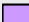




Percentages are based on totals of each column

■ Baseline ■ Current

Changes in Living Arrangement Since Admission by LHIN

		1		2		3		4		5		6		7	
Total		221	221	615	608	164	175	267	267	106	105	171	171	404	375
		Baseline	Current	Baseline	Current	Baseline	Current	Baseline	Current	Baseline	Current	Baseline	Current	Baseline	Current
 Non Relatives		62%	10%	46%	22%	39%	35%	26%	22%	40%	40%	16%	19%	43%	27%
 Relatives		4%	0%	3%	2%	19%	17%	3%	4%	10%	7%	8%	6%	3%	3%
 Parents		12%	7%	9%	8%	7%	4%	19%	16%	30%	27%	30%	26%	12%	8%
 Children		1%	1%	1%	1%	1%	1%	1%	1%	2%	1%	2%	2%	0%	1%
 Partners et al		0%	1%	3%	2%	3%	1%	2%	0%	2%	3%	2%	2%	0%	3%
 Partner		1%	1%	6%	8%	2%	1%	9%	9%	2%	5%	8%	5%	3%	4%
 Self		19%	79%	32%	57%	29%	41%	40%	48%	14%	18%	33%	40%	38%	54%

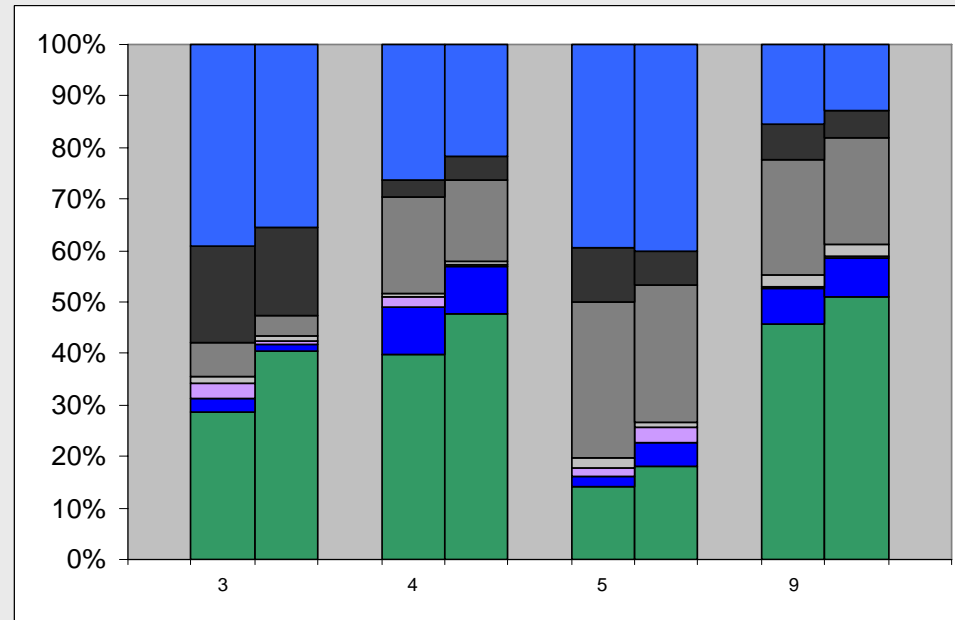
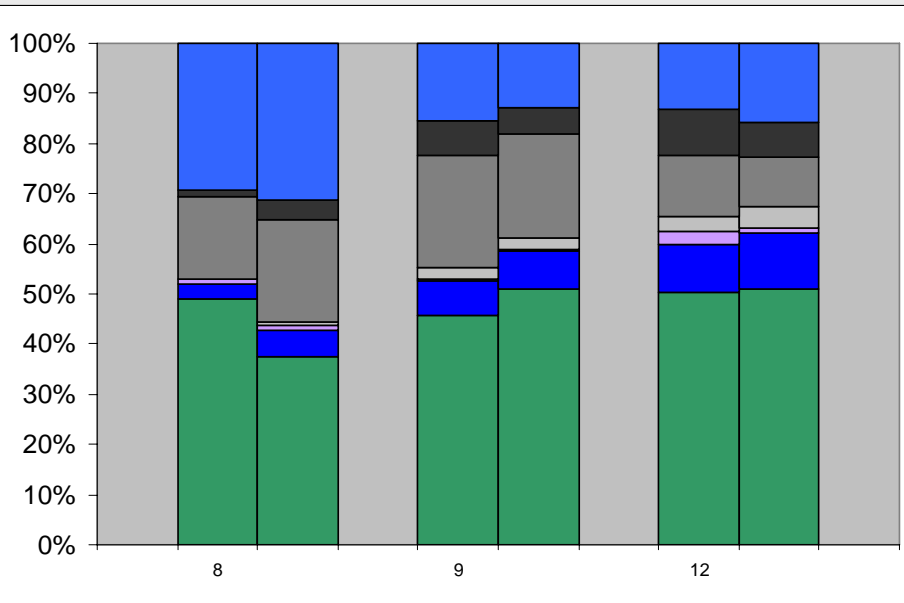
		8		9		10		11		12		13		14	
Total		332	341	379	378	604	602	443	515	107	114	322	339	158	157
		Baseline	Current	Baseline	Current	Baseline	Current	Baseline	Current	Baseline	Current	Baseline	Current	Baseline	Current
 Non Relatives		29%	31%	16%	13%	36%	35%	39%	43%	13%	16%	33%	23%	28%	17%
 Relatives		2%	4%	7%	5%	3%	2%	3%	3%	9%	7%	2%	3%	4%	6%
 Parents		16%	21%	22%	21%	10%	8%	12%	6%	12%	10%	11%	4%	14%	10%
 Children		0%	1%	2%	2%	1%	1%	2%	1%	3%	4%	2%	1%	1%	1%
 Partners et al		1%	1%	0%	0%	1%	1%	2%	1%	3%	1%	12%	17%	3%	1%
 Partner		3%	5%	7%	7%	7%	8%	6%	6%	9%	11%	6%	7%	6%	9%
 Self		49%	38%	46%	51%	42%	45%	37%	39%	50%	51%	33%	46%	43%	55%

Percentages are based on totals of each column

Changes in Living Arrangement Since Admission

CE: LHIN's 8, 9, 12

CW: LHIN's 3, 4, 5, 9



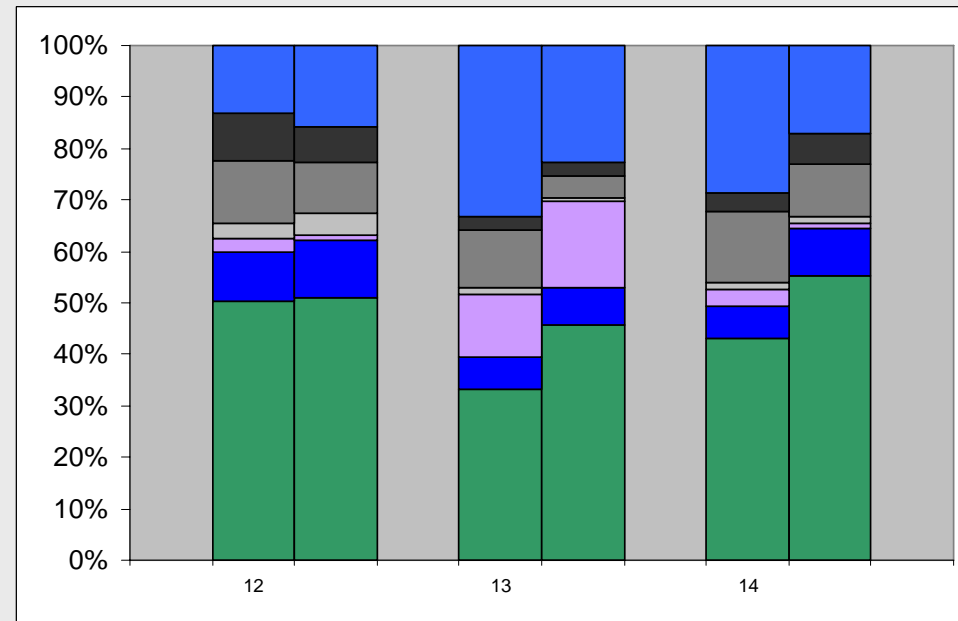
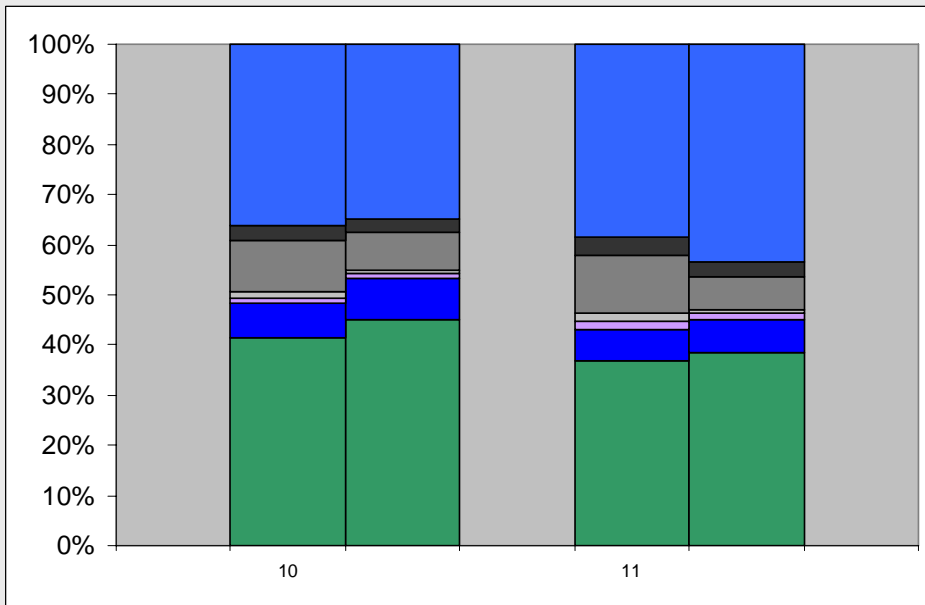
■ Non Relatives
 ■ Relatives
 ■ Parents
 ■ Children
 ■ Partners et al
 ■ Partner
 ■ Self

Percentages are based on totals of each column

Changes in Living Arrangement Since Admission

EA: LHIN's 10, 11

NO: LHIN's 12, 13, 14



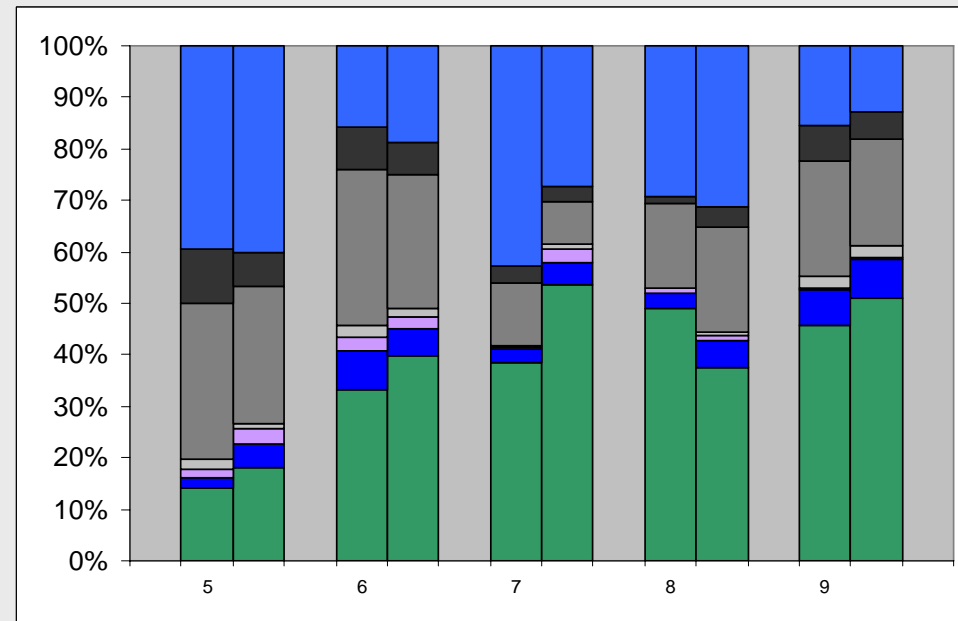
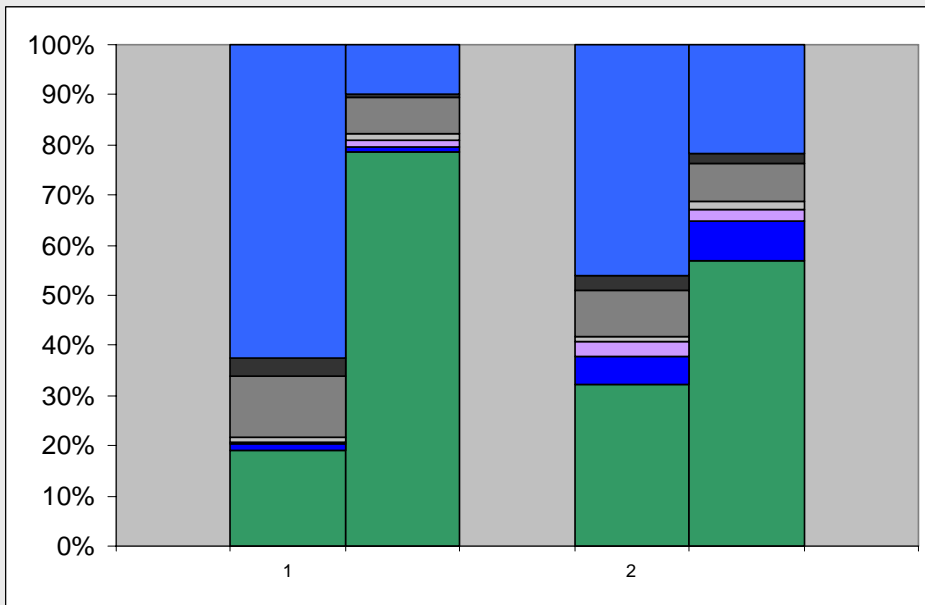
■ Non Relatives
 ■ Relatives
 ■ Parents
 ■ Children
 ■ Partners et al
 ■ Partner
 ■ Self

Percentages are based on totals of each column

Changes in Living Arrangement Since Admission

SO: LHIN's 1, 2

GTA: LHIN's 5, 6, 7, 8, 9



■ Non Relatives
 ■ Relatives
 ■ Parents
 ■ Children
 ■ Partners et al
 ■ Partner
 ■ Self

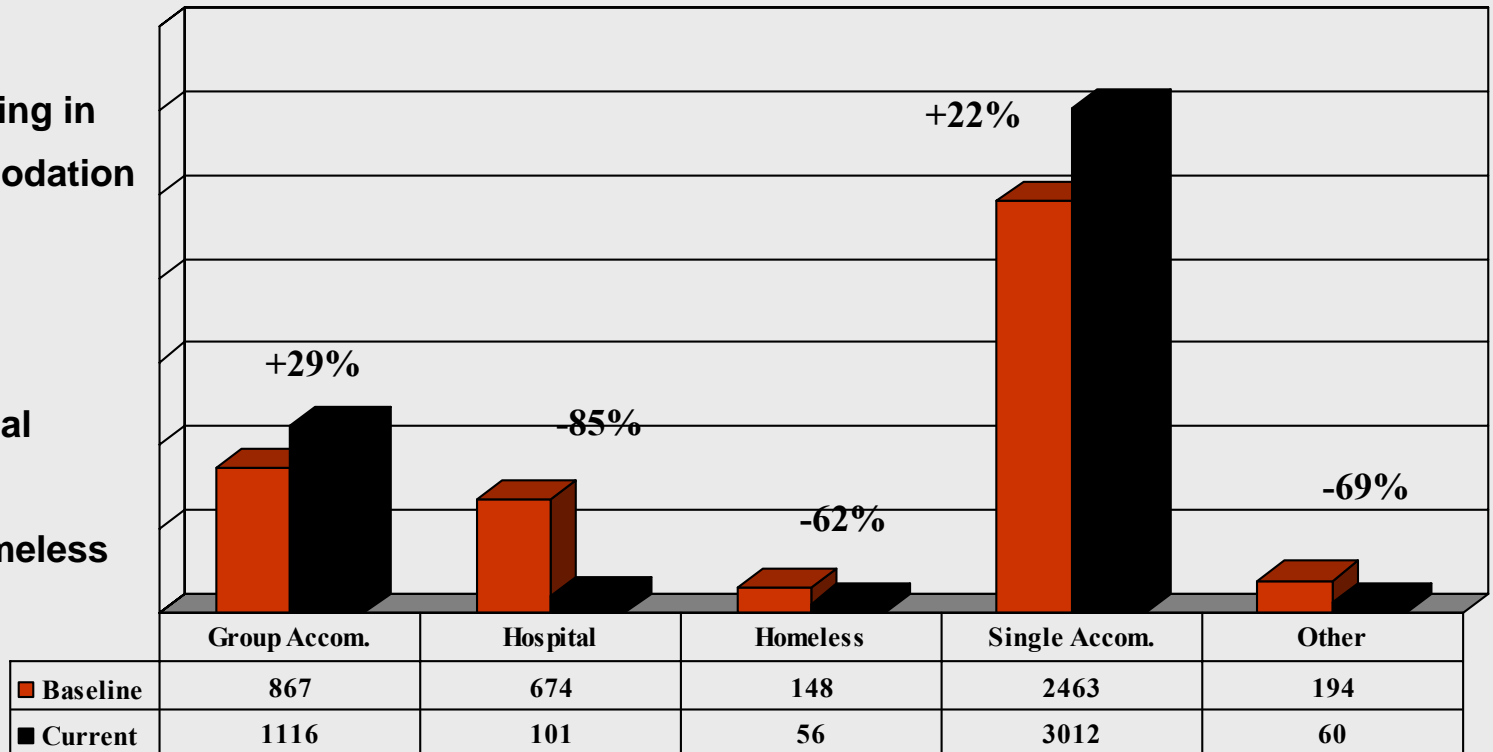
Percentages are based on totals of each column

Residence Type For ACT Clients Since Admission

22% Increase in ACT Clients Living in Single Accommodation

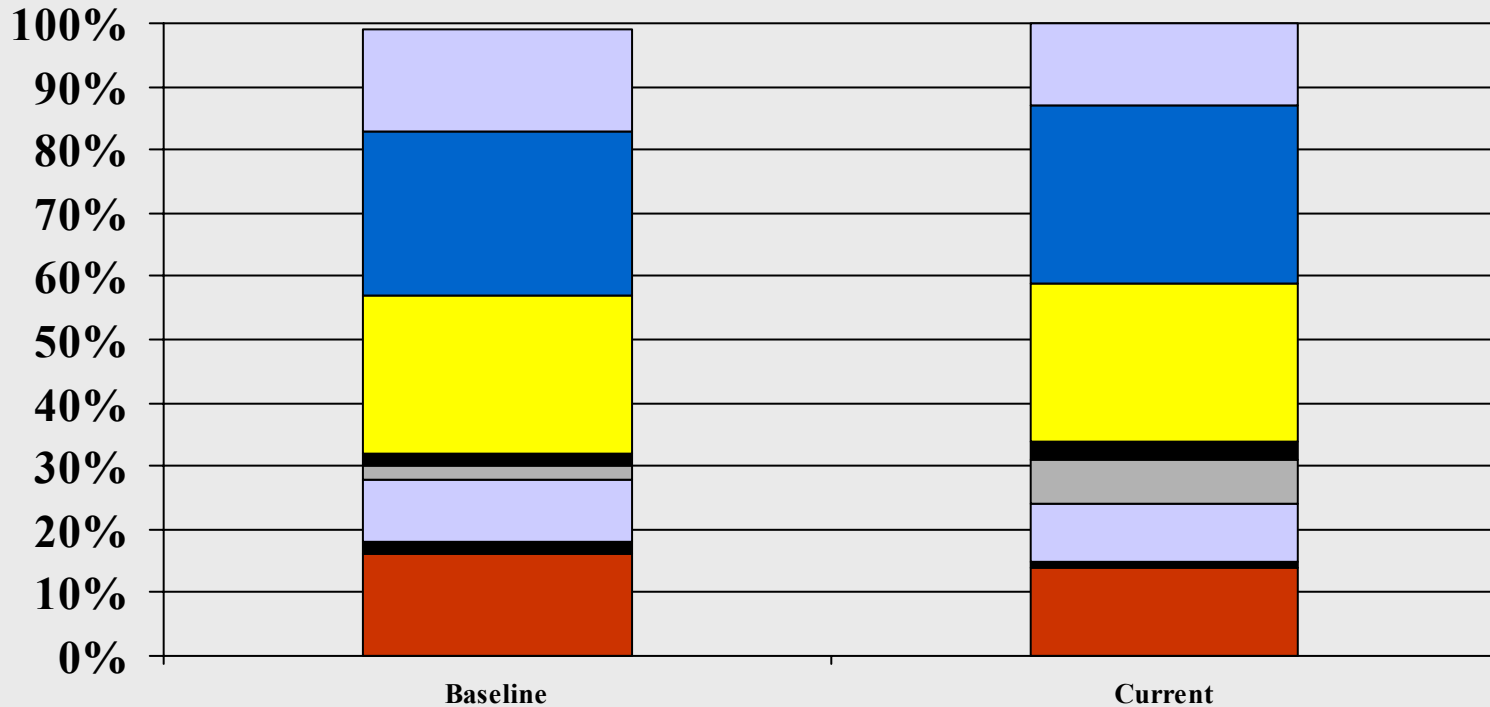
85% Reduction of Clients Living in Hospital

62% less in Homeless



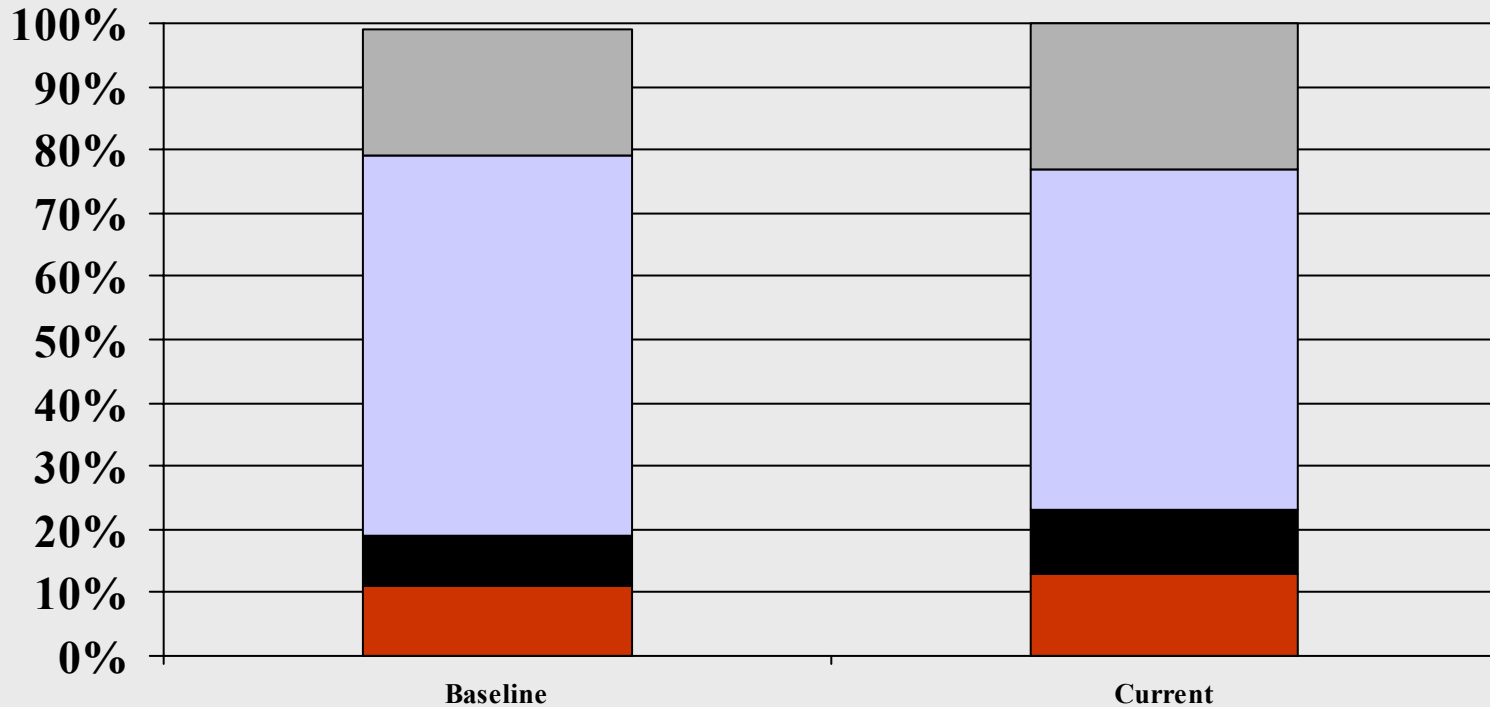
- Group = Approved Homes and HSC, Correctional/Probation facility, Domiciliary Hostels, Long term care facility/Nursing Home, Retirement Home/Senior Residence, Rooming/Boarding house, Supportive Housing- Congregate Living, and Supportive Housing - Assisted Living.
- Hospital = General Hospital, Psychiatric Hospital (Specialized), and Other Specialty Hospital.
- Homeless = Homeless and Hostel/shelter.
- Single = Municipal Non-Profit Housing, Private Non-Profit Housing, and Private house/Condo (Service Recipient & Other).

Breakdown of Group Accommodation Residence Type



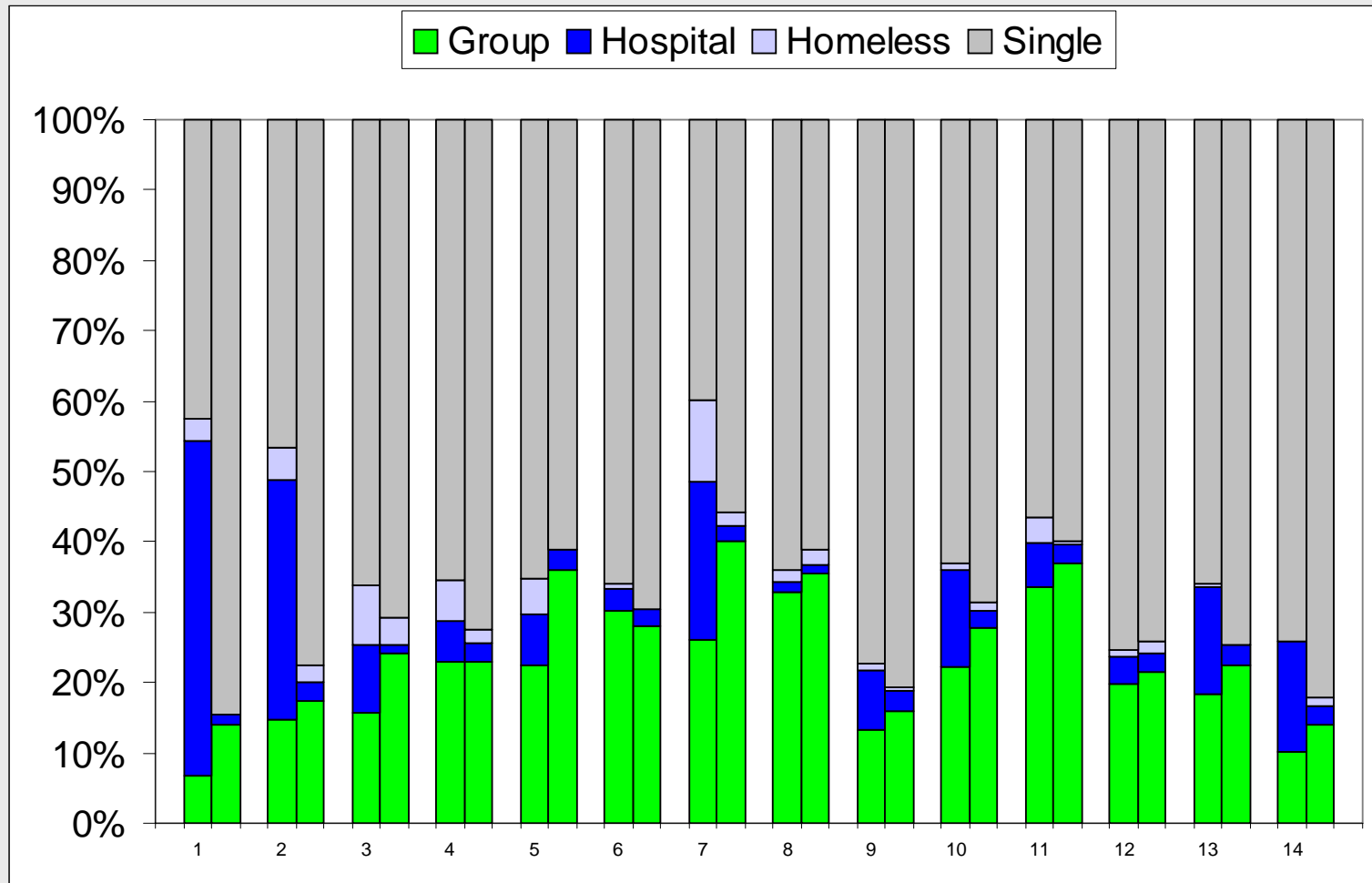
Residence Type	Baseline		Current	
Supportive Housing - Assisted Living	135	16%	147	13%
Supportive Housing- Congregate Living	227	26%	312	28%
Rooming/Boarding house	220	25%	279	25%
Retirement Home/Senior residence	19	2%	36	3%
Long term care facility/Nursing Home	19	2%	76	7%
Domicillary Hostel	91	10%	100	9%
Correctional/Probation facility	21	2%	13	1%
Approved Homes and HSC	135	16%	153	14%

Breakdown of Single Accommodation Residence Type



Residence Type	Baseline		Current	
Private House/ Apt. – Other / Subsidized	503	20%	694	23%
Private House/ Apt. – SR Owned /Market Rent	1490	60%	1634	54%
Private Non-Profit Housing	202	8%	287	10%
Municipal Non-Profit Housing	268	11%	397	13%

Residence Type Since Admission by LHIN



Percentages are based on totals of each column

Residence Type Since Admission by LHIN

	1		2		3		4		5		6		7	
	221	221	614	604	166	178	261	262	98	103	123	171	403	361
	Baseline	Current	Baseline	Current	Baseline	Current	Baseline	Current	Baseline	Current	Baseline	Current	Baseline	Current
Single	43%	85%	47%	78%	66%	71%	66%	73%	65%	61%	66%	70%	40%	56%
Homeless	3%	0%	5%	2%	8%	4%	6%	2%	5%	0%	1%	0%	11%	2%
Hospital	48%	1%	34%	3%	10%	1%	6%	3%	7%	3%	3%	2%	23%	2%
Group	7%	14%	15%	17%	16%	24%	23%	23%	22%	36%	30%	28%	26%	40%

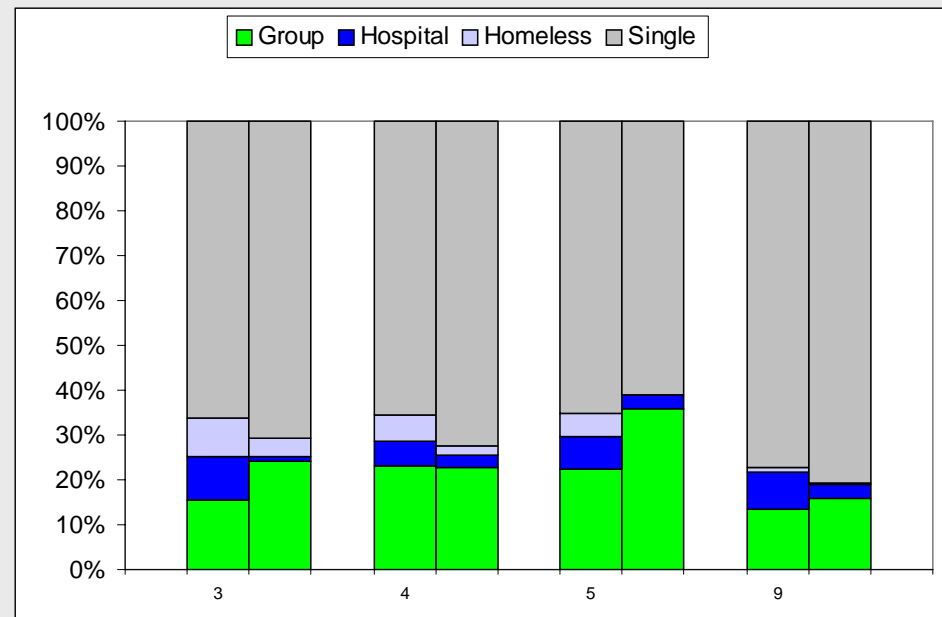
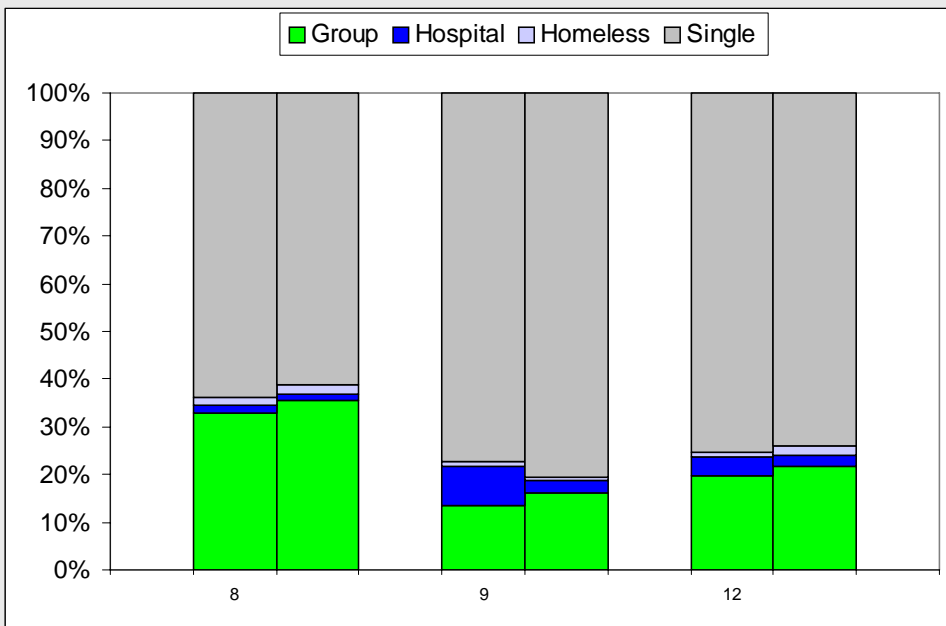
	8		9		10		11		12		13		14	
	247	324	367	351	607	607	438	510	106	116	343	320	158	157
	Baseline	Current	Baseline	Current	Baseline	Current	Baseline	Current	Baseline	Current	Baseline	Current	Baseline	Current
Single	64%	61%	77%	81%	63%	69%	57%	60%	75%	74%	66%	75%	74%	82%
Homeless	2%	2%	1%	1%	1%	1%	3%	1%	1%	2%	1%	0%	0%	1%
Hospital	2%	1%	8%	3%	14%	2%	6%	3%	4%	3%	15%	3%	16%	3%
Group	33%	35%	13%	16%	22%	28%	34%	37%	20%	22%	18%	23%	10%	14%

Percentages are based on totals of each column

Residence Type Since Admission

CE: LHIN 8, 9, 12

CW: LHIN 3, 4, 5, 9



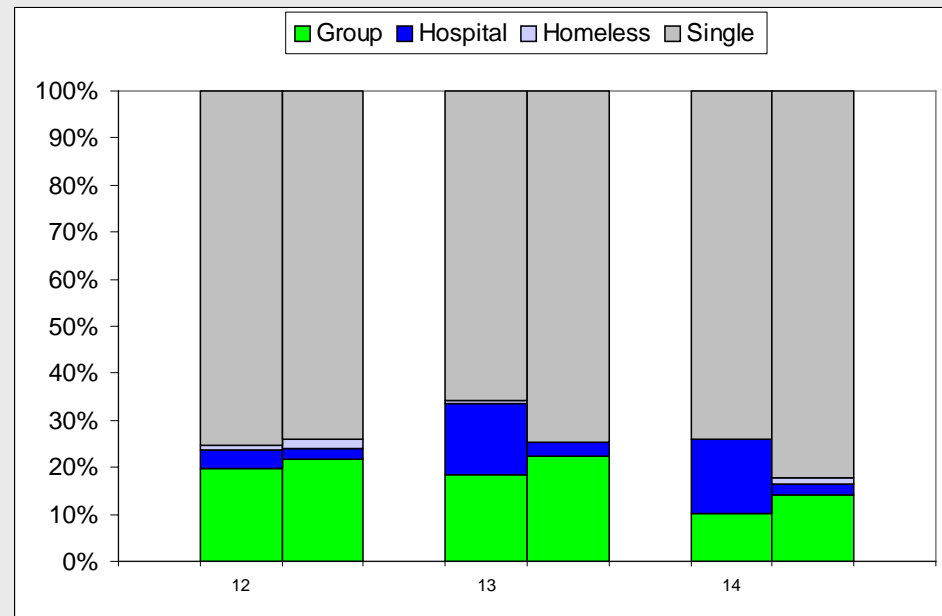
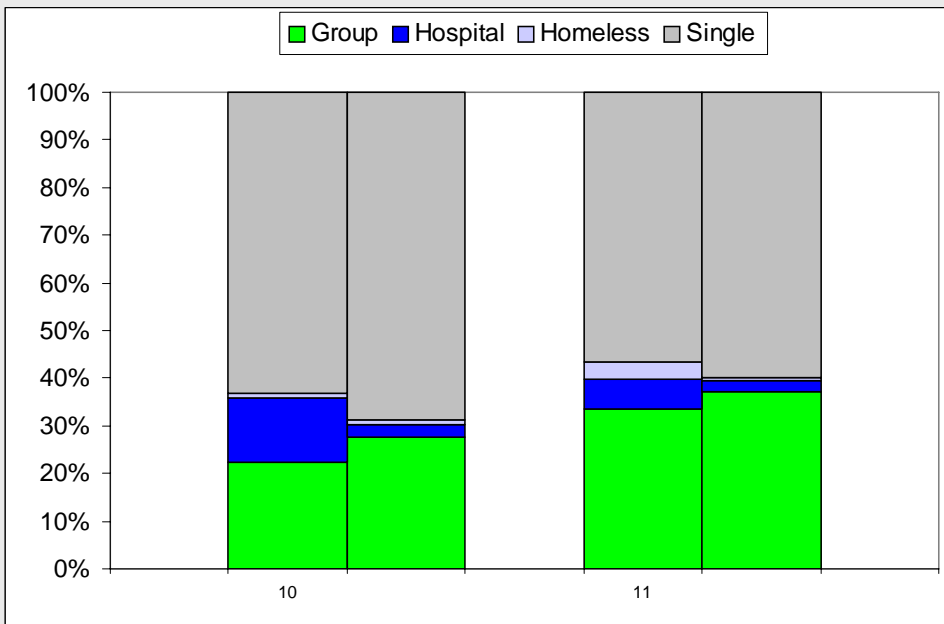
Single Homeless Hospital Group

Percentages are based on totals of each column

Residence Type Since Admission

EA: LHIN 10, 11

NO: LHIN 12, 13, 14



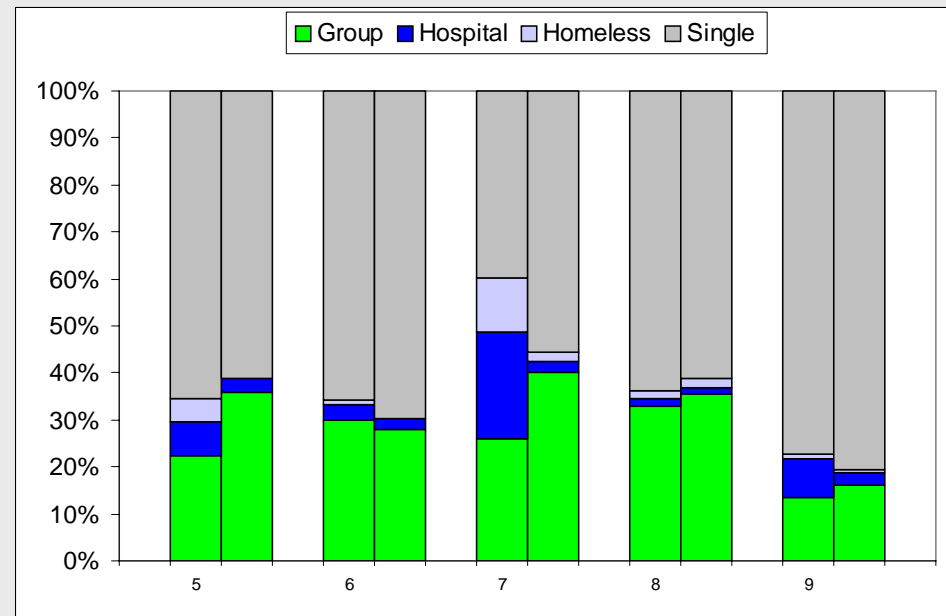
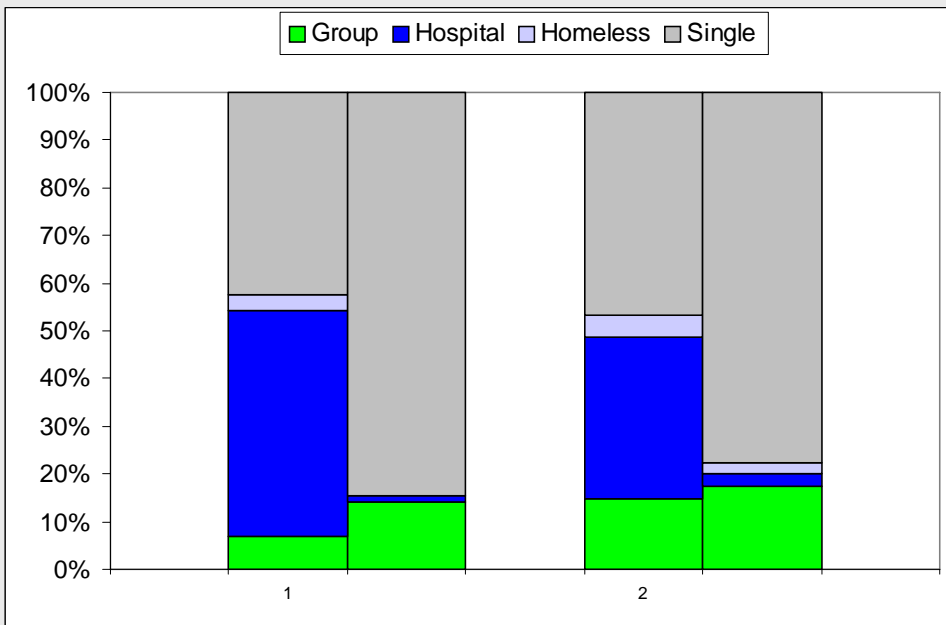
Single Homeless Hospital Group

Percentages are based on totals of each column

Residence Type Since Admission

SO: LHIN 1, 2

GTA: LHIN 5, 6, 7, 8, 9

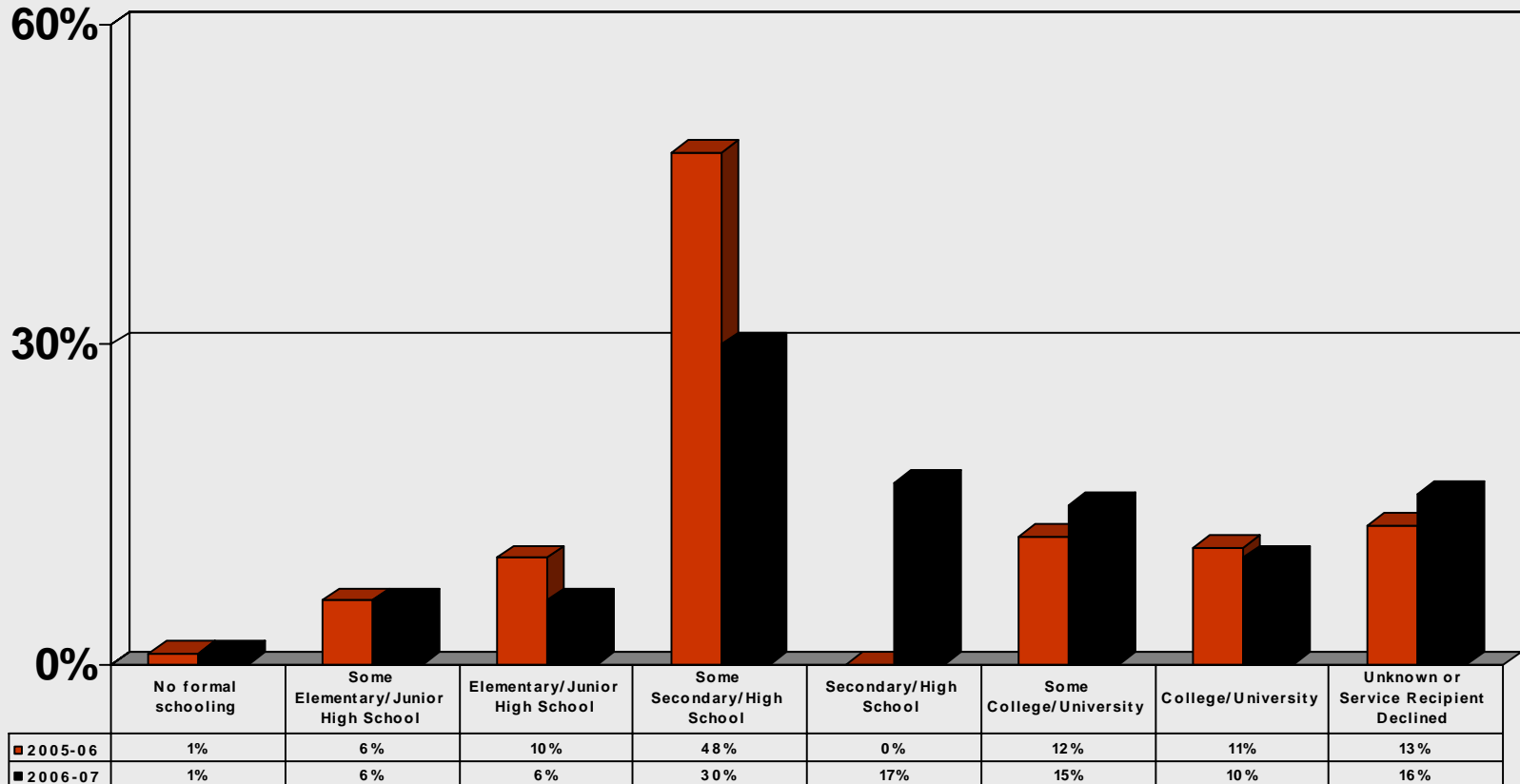


Single Homeless Hospital Group

Percentages are based on totals of each column

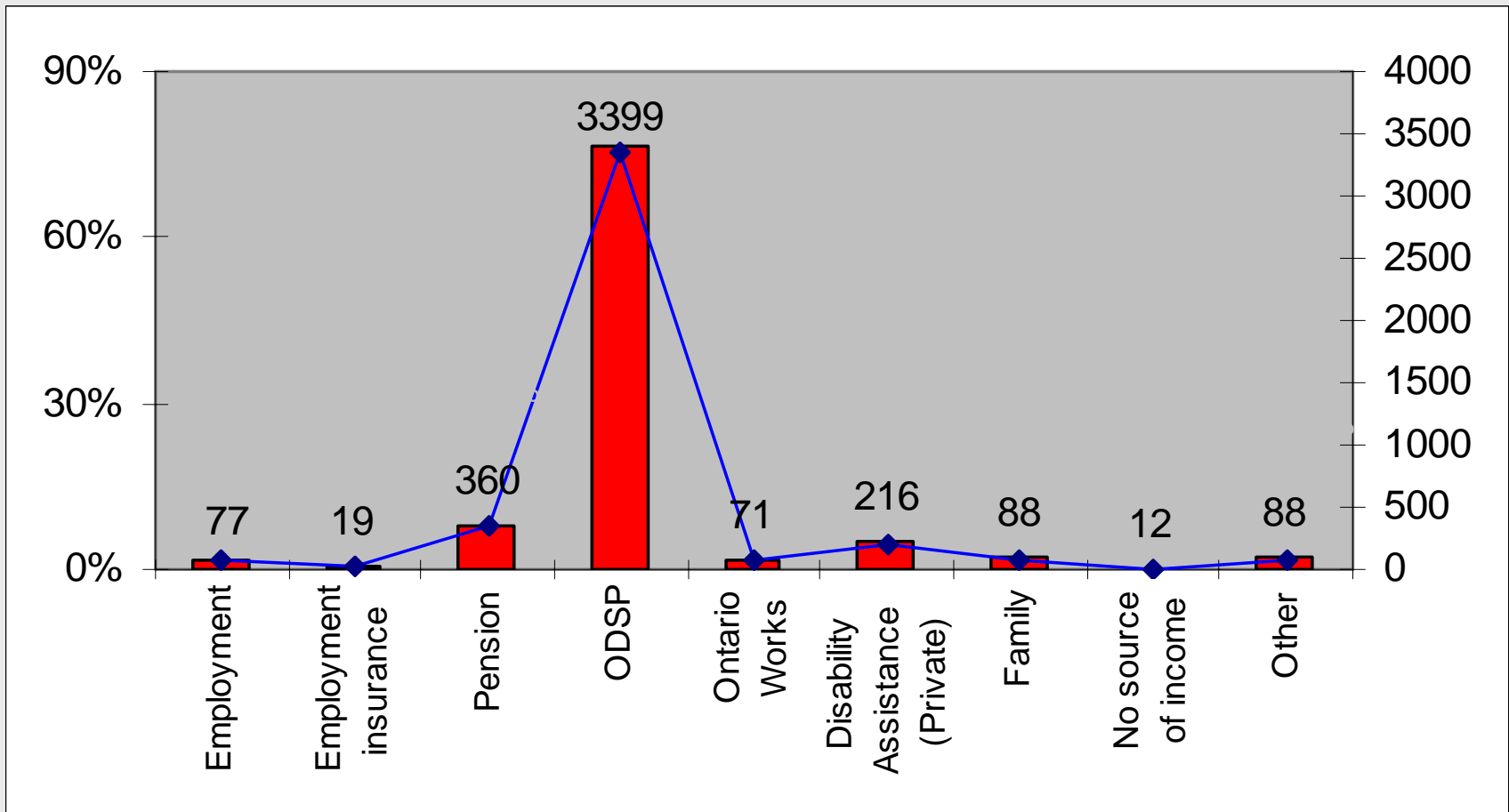
Highest Level of Education of ACT Clients

(As of March 31, 2007)

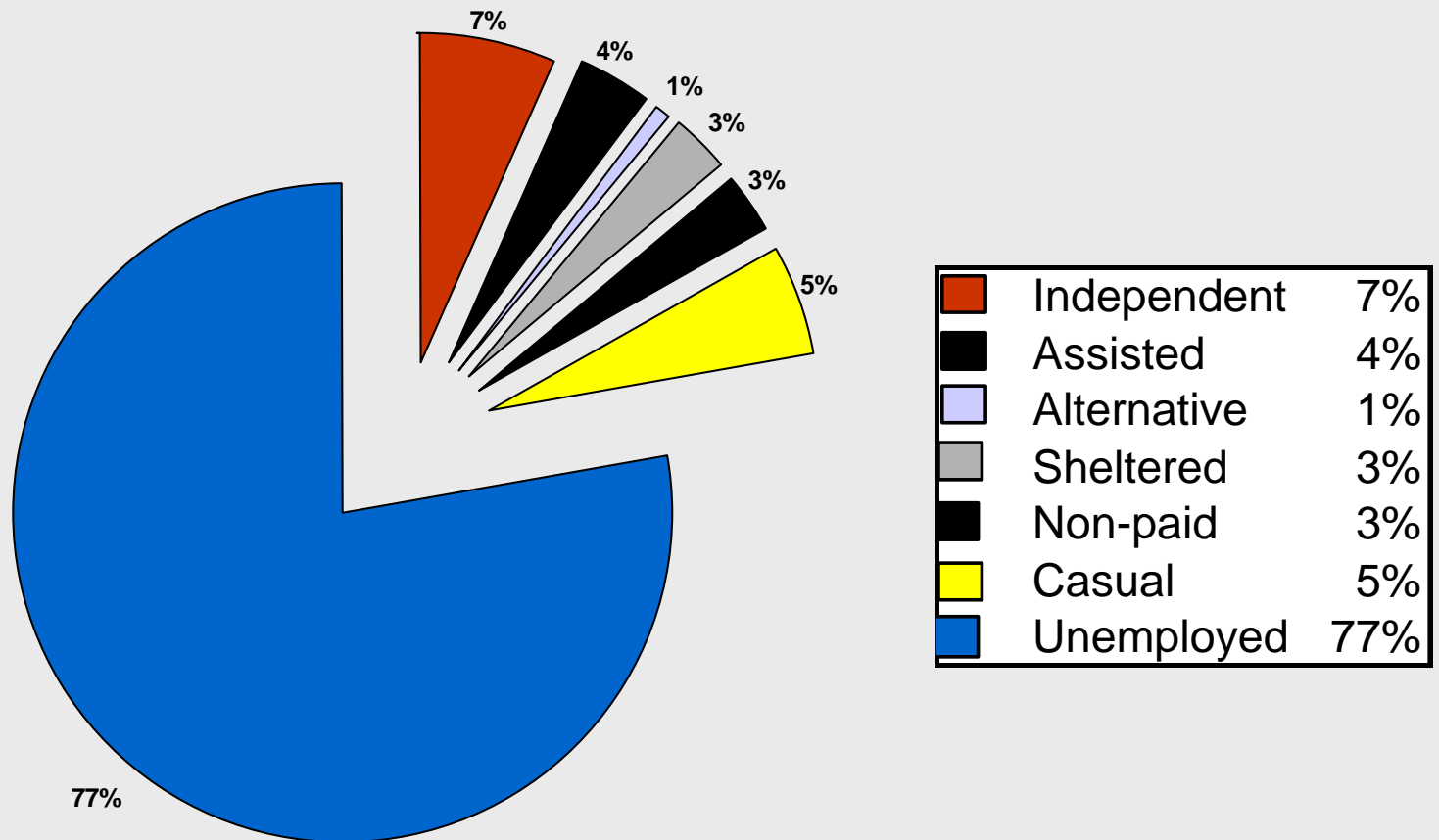


Source of Income for ACT Clients

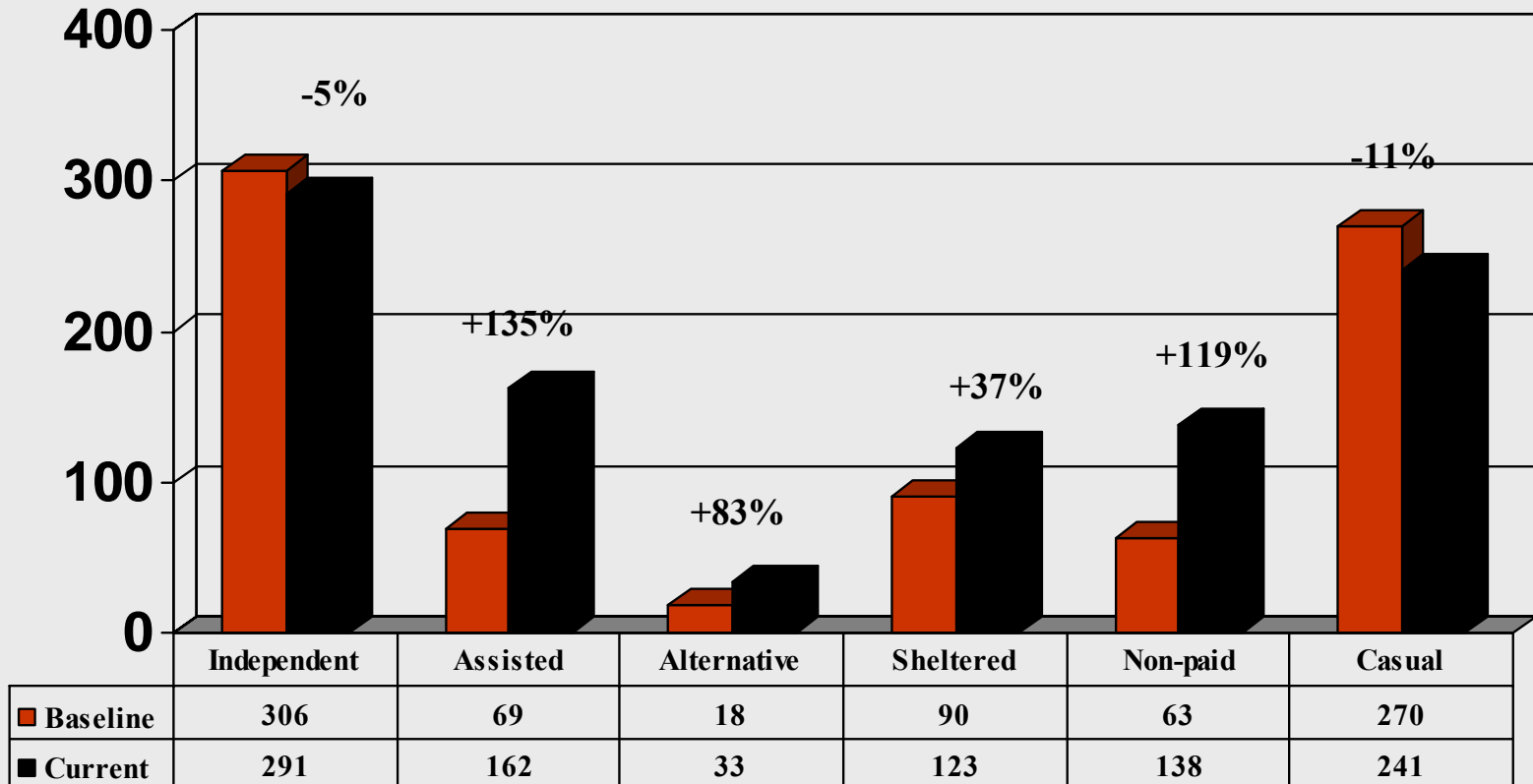
(Current as at March 31, 2007)



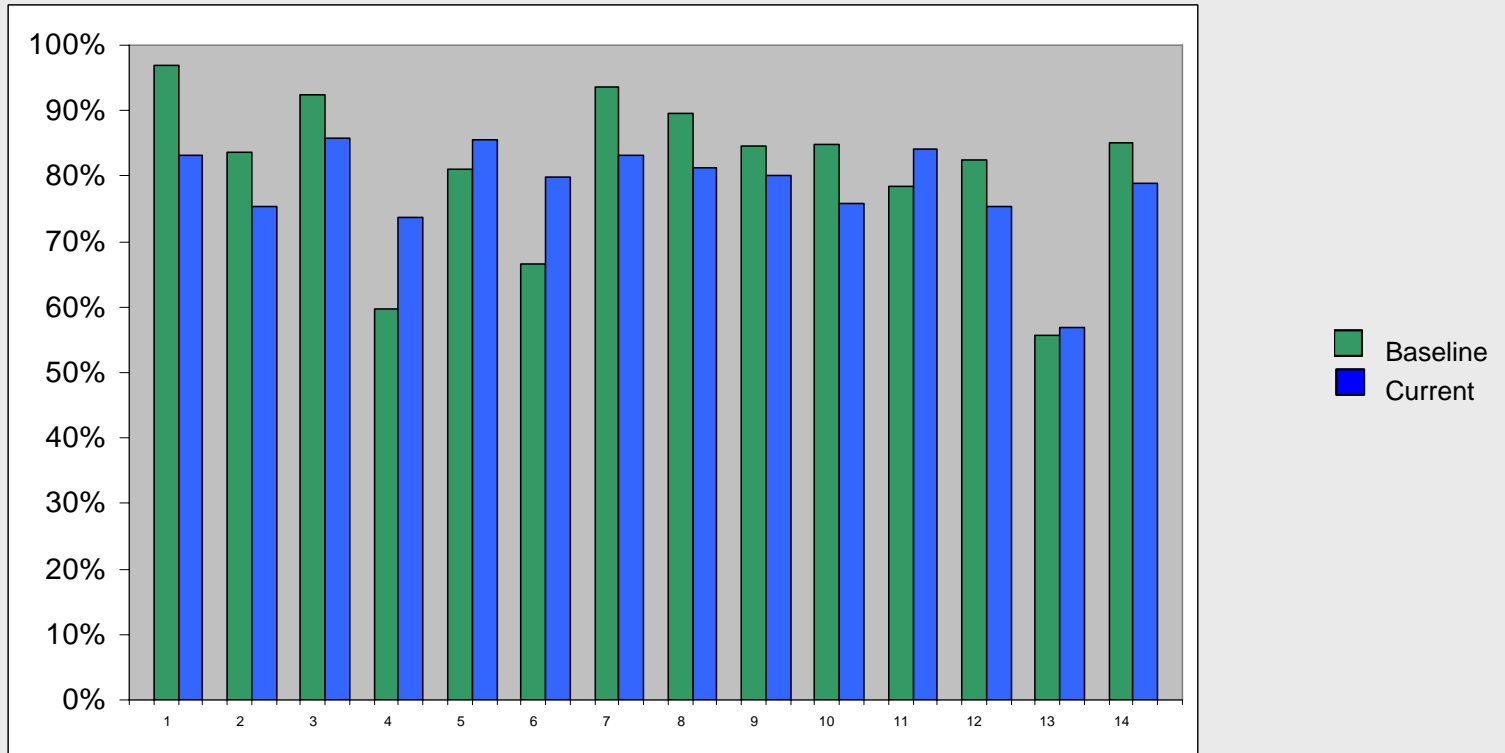
Current Employment Status of ACT Clients



Changes in Client Employment Status Since Admission



Unemployment Changes Since Admission By LHIN - Baseline to



1		2		3		4		5		6		7	
Baseline	Current	Baseline	Current	Baseline	Current	Baseline	Current	Baseline	Current	Baseline	Current	Baseline	Current
214	184	514	457	158	151	160	197	77	89	110	135	378	313
97%	83%	84%	75%	92%	86%	60%	74%	81%	86%	67%	80%	94%	83%
8		9		10		11		12		13		14	
Baseline	Current	Baseline	Current	Baseline	Current	Baseline	Current	Baseline	Current	Baseline	Current	Baseline	Current
302	279	324	310	517	463	351	438	90	89	204	213	132	123
90%	81%	85%	80%	85%	76%	78%	84%	83%	75%	56%	57%	85%	79%

Percentages are based on totals of each column

Unemployment Changes Since Admission By LHIN

	1		2		3		4		5		6		7	
	221	221	615	607	171	176	268	267	95	104	165	169	404	376
	Baseline	Current	Baseline	Current	Baseline	Current	Baseline	Current	Baseline	Current	Baseline	Current	Baseline	Current
Unemployed	97%	83%	84%	75%	92%	86%	60%	74%	81%	86%	67%	80%	94%	83%
Casual	0%	0%	7%	7%	4%	6%	25%	5%	14%	9%	22%	11%	1%	4%
Non-paid	0%	4%	1%	2%	1%	3%	1%	1%	3%	1%	2%	1%	1%	5%
Sheltered	0%	0%	2%	6%	0%	0%	5%	6%	1%	1%	3%	2%	1%	1%
Alternative	0%	0%	0%	1%	0%	0%	1%	1%	0%	0%	1%	1%	0%	1%
Assisted	0%	7%	1%	3%	1%	1%	2%	4%	1%	4%	1%	2%	0%	2%
Independent	3%	5%	5%	5%	2%	5%	6%	8%	0%	0%	4%	4%	3%	4%

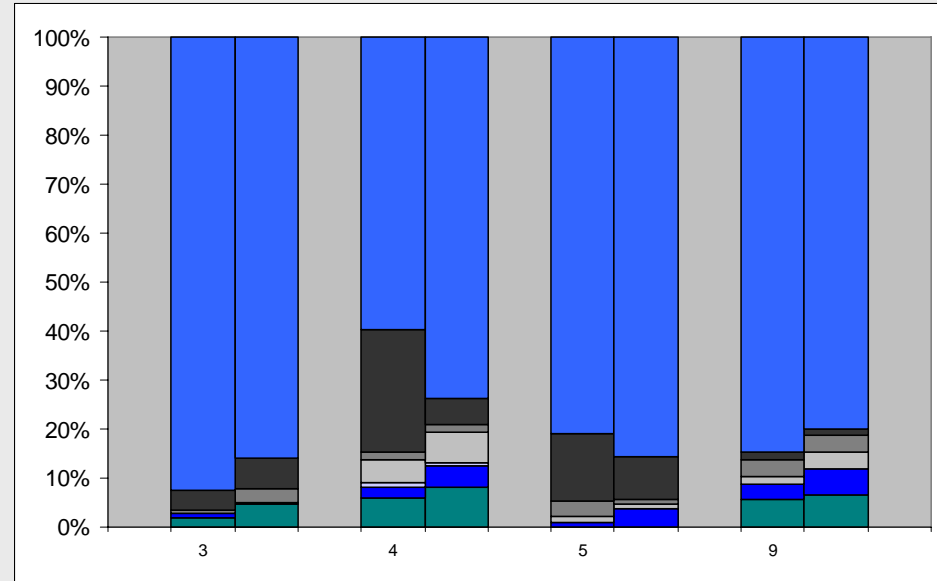
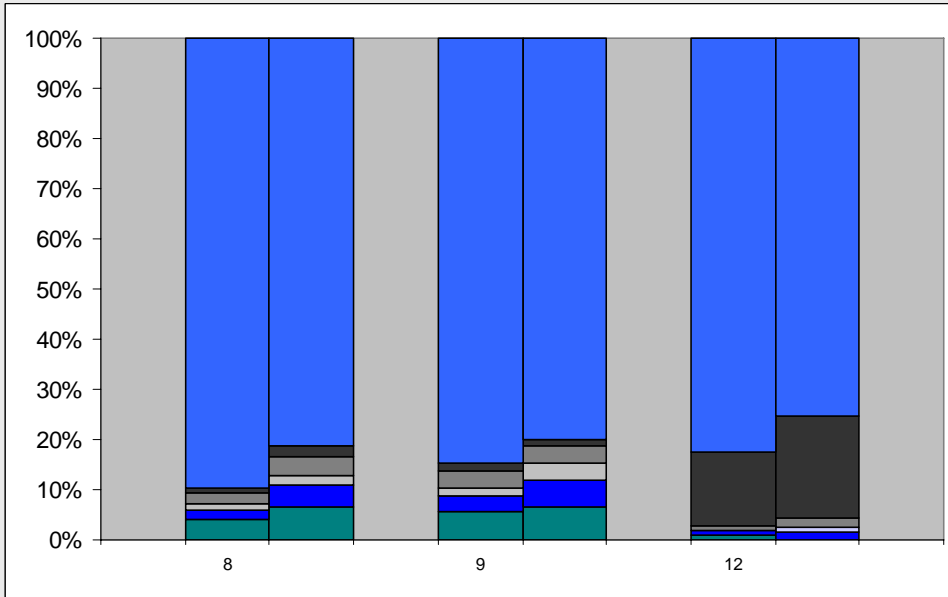
	8		9		10		11		12		13		14	
	337	343	383	387	610	610	448	521	109	118	366	374	155	156
	Baseline	Current	Baseline	Current	Baseline	Current	Baseline	Current	Baseline	Current	Baseline	Current	Baseline	Current
Unemployed	90%	81%	85%	80%	85%	76%	78%	84%	83%	75%	56%	57%	85%	79%
Casual	1%	2%	2%	1%	5%	6%	3%	5%	15%	20%	7%	5%	6%	8%
Non-paid	2%	4%	3%	3%	1%	4%	1%	3%	1%	2%	1%	3%	1%	1%
Sheltered	1%	2%	2%	3%	3%	3%	2%	3%	0%	0%	6%	4%	0%	0%
Alternative	0%	0%	0%	0%	2%	2%	0%	0%	0%	1%	0%	1%	1%	1%
Assisted	2%	5%	3%	5%	3%	7%	0%	1%	1%	2%	2%	3%	1%	3%
Independent	4%	6%	5%	7%	1%	3%	16%	3%	1%	0%	29%	28%	6%	8%

Percentages are based on totals of each column

Unemployment Changes Since Admission

CE: LHIN 8, 9, 12

CW: LHIN 3, 4, 5, 9



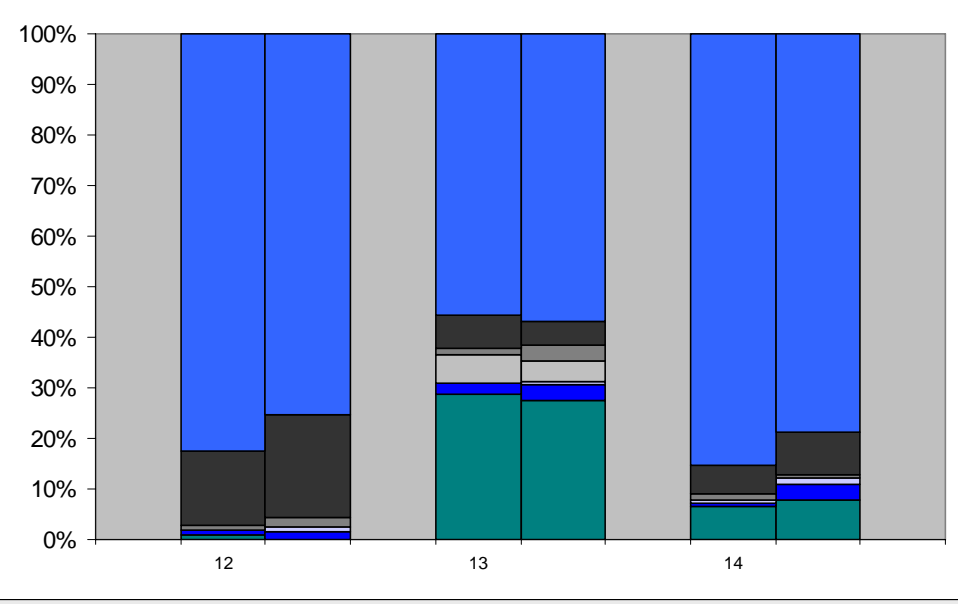
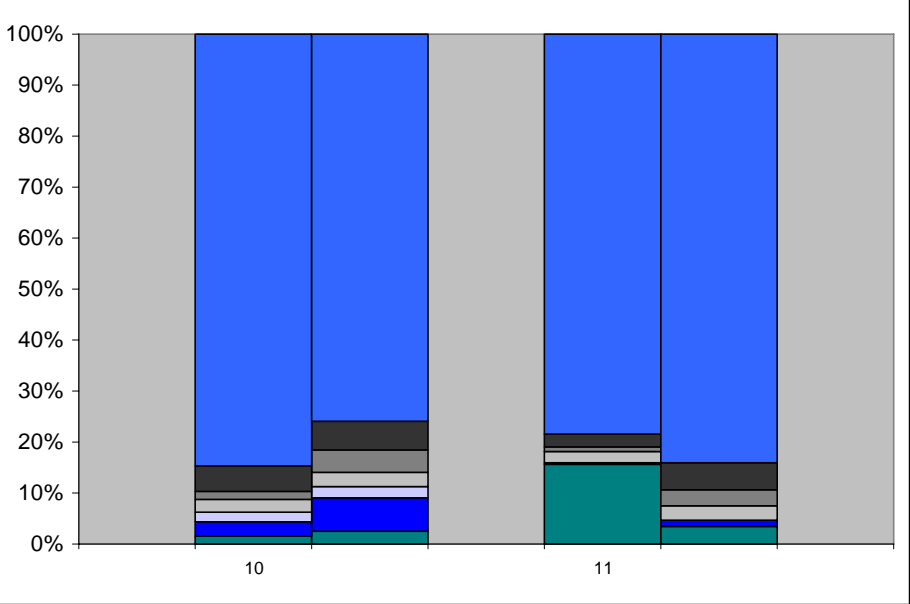
■ Unemployed
 ■ Casual
 ■ Non-paid
 ■ Sheltered
 ■ Alternative
 ■ Assisted
 ■ Independent

Percentages are based on totals of each column

Unemployment Changes Since Admission

EA: LHIN 10, 11

NO: LHIN 12, 13, 14



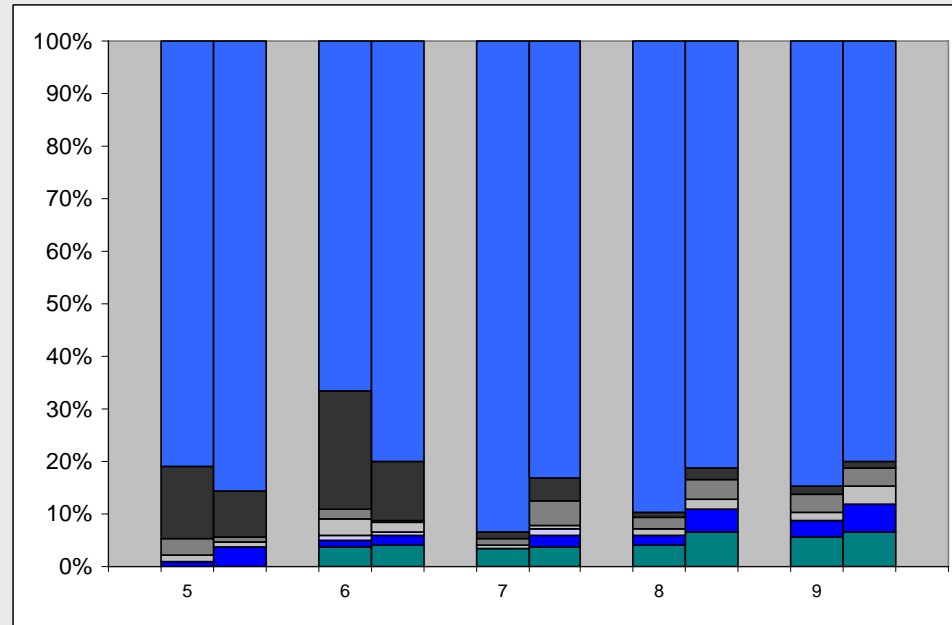
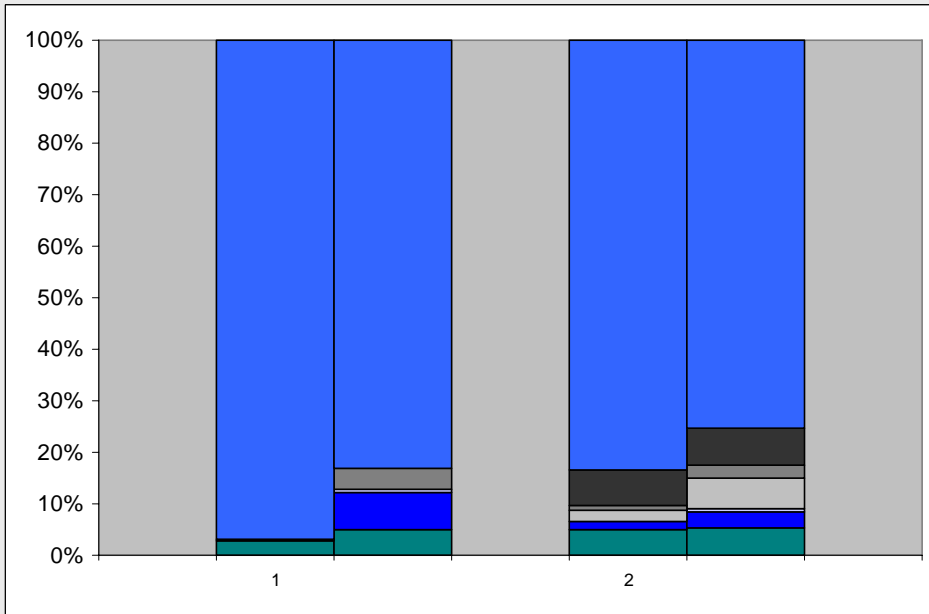
■ Unemployed
 ■ Casual
 ■ Non-paid
 ■ Sheltered
 ■ Alternative
 ■ Assisted
 ■ Independent

Percentages are based on totals of each column

Unemployment Changes Since Admission

SO: LHIN 1, 2

GTA: LHIN 5, 6, 7, 8, 9



■ Unemployed
 ■ Casual
 ■ Non-paid
 ■ Sheltered
 ■ Alternative
 ■ Assisted
 ■ Independent

Percentages are based on totals of each column

Ontario ACT Average Client Hospital Use

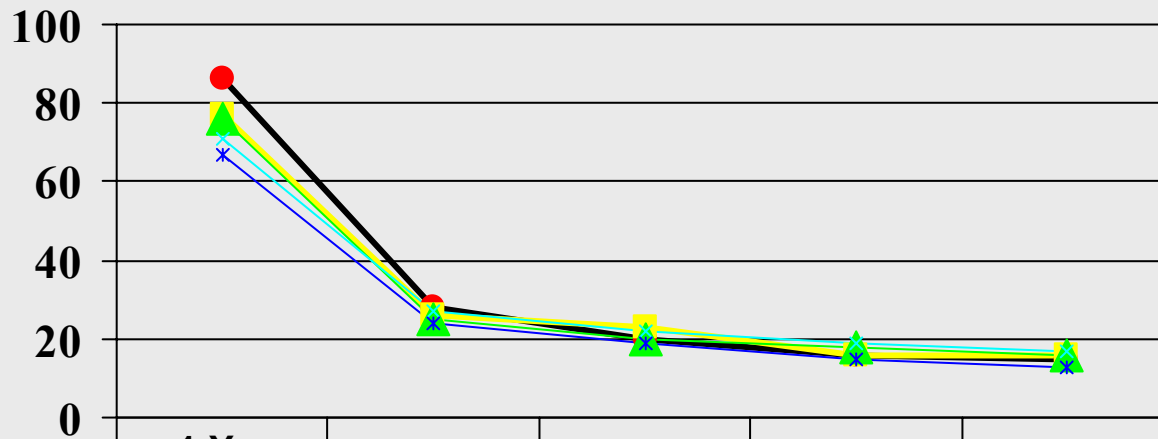
- Average client used 67 hospital bed days in each of the 2 years Pre-ACT.
- Canadian research* demonstrates that 50 days of hospitalization 1 year Pre-ACT is the cut-off point for cost effectiveness.

* *Latimer, E. "Economic Impacts of ACT" (Can J Psychiatry 1999; 44: 443-454)*

ACT Impact on Client Use of Hospital Bed Days

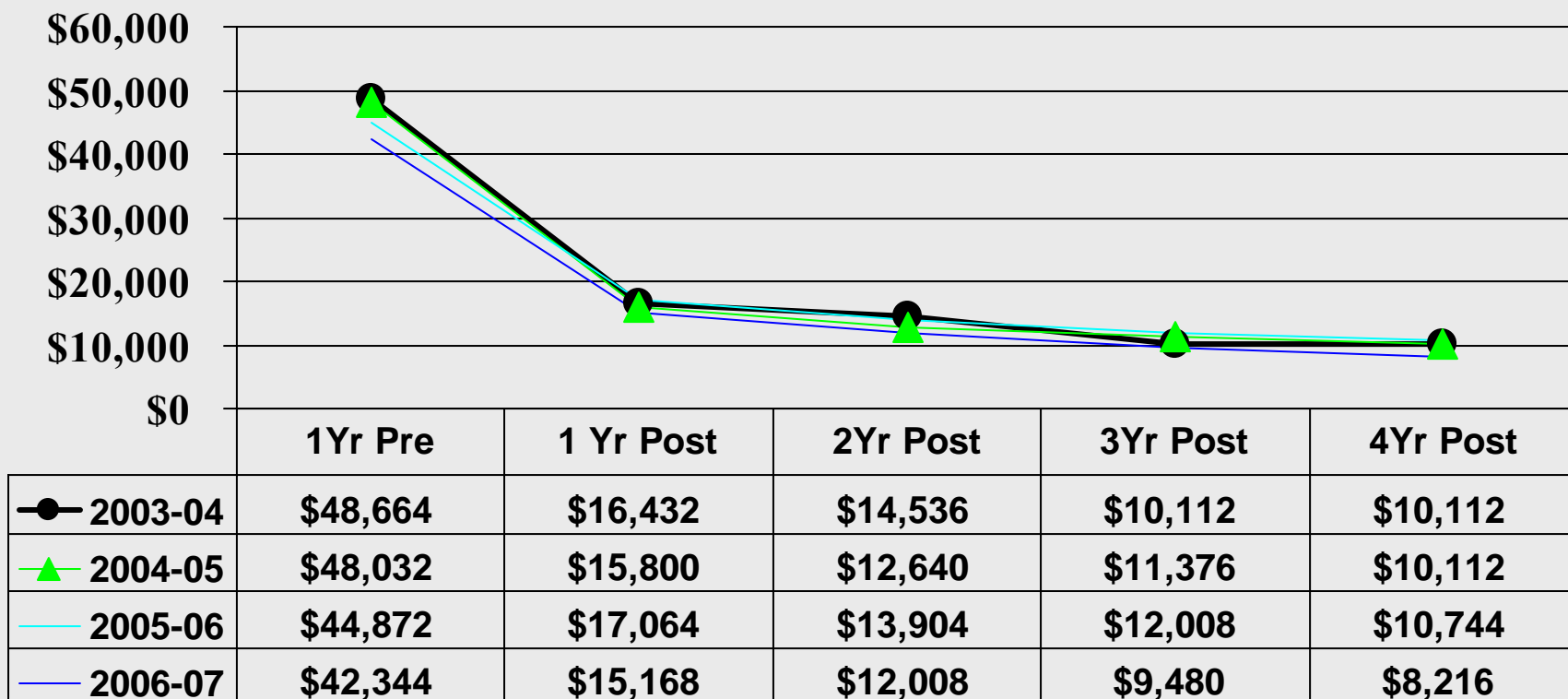
- Average Pre-ACT Bed Day use in each of the 2 years prior to enrollment = 67 days
- Average ACT Bed Day use after 1 year in ACT = 24 days (64% reduction)
- After 2 years = 19 days (71% reduction)
- After 3 years = 15 days (78% reduction)
- After 4 years = 13 days (81% reduction)
- After 5 years = 13 days (81% reduction)
- After 6 years = 12 days (82% reduction)

Comparison of Average Hospital Bed Day Reduction Results



	1 Year Pre-ACT	Year 1	Year 2	Year 3	Year 4
● 2002-03	86	28	20	16	15
■ 2003-04	77	26	23	16	16
▲ 2004-05	76	25	20	18	16
✧ 2005-06	71	27	22	19	17
* 2006-07	67	24	19	15	13

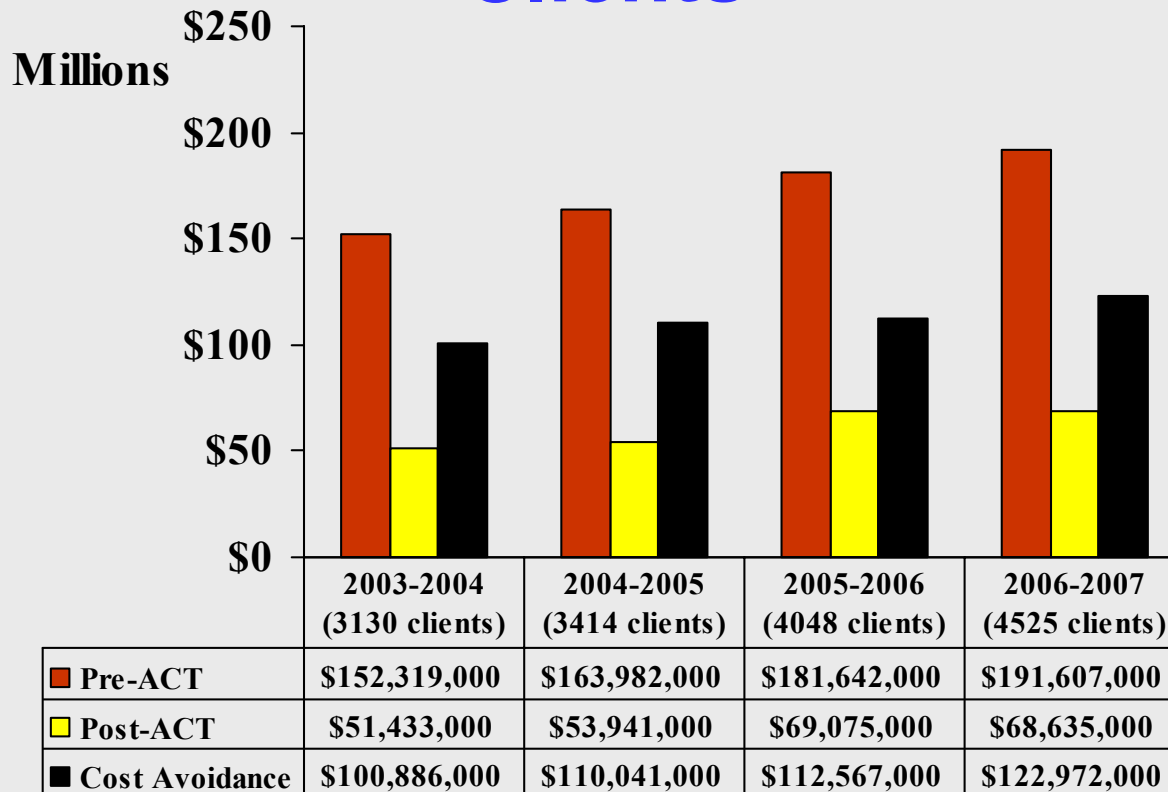
Comparing the Value of an Individual ACT Client's Reduced Hospital Bed Utilization



Avg. Bed Day Cost = \$632[†]

[†] Source for Average Bed Day Cost: http://www.chsrf.ca/final_research/ogc/forchuk_e.php
 Forchuk, Cheryl, RN, PhD., "Therapeutic Relationships: From Hospital to Community" (June 2002)

Value of Reduced ACT Hospital Bed Day Utilization Projected to 4525 Clients



4525 clients: Pre-ACT averages 67 Bed Days; declines to 24 Avg. Bed Days after 1 year in ACT

N.B. - #'s rounded off to the nearest thousand

Using Average Bed Cost of \$632[†]

[†] Source for Average Bed Day Cost: http://www.chsrf.ca/final_research/ogc/forchuk_e.php

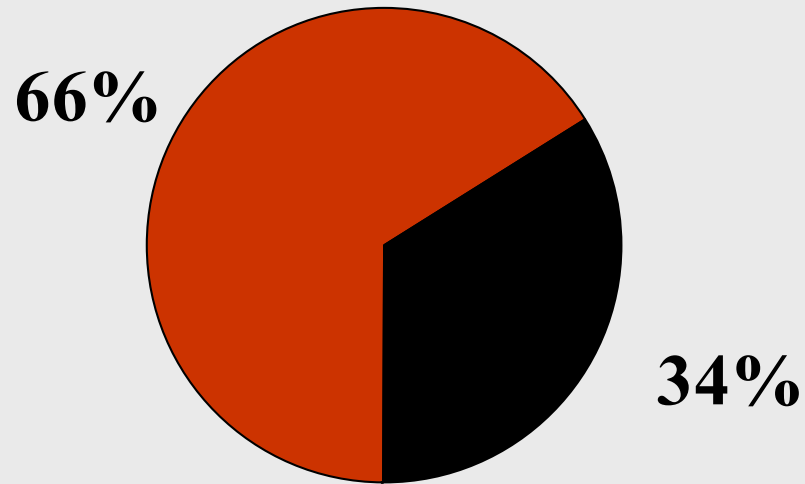
Forchuk, Cheryl, RN, PhD., "Therapeutic Relationships: From Hospital to Community" (June 2002)

Estimated Bed Day Reduction and Cost Savings by ACT Cohort

Cohort	SR	Pre-Act Hosp Days	Post-Act Hosp Days	Avg Bed Day Cost	Hospital Dollar Savings	Hospital Days Reduction
0	853	52.5				
1	604	63.0	23.9	\$ 632	\$ 14,939,426	23,638
2	511	65.5	19.2	\$ 632	\$ 14,964,596	23,678
3	444	68.0	14.8	\$ 632	\$ 14,919,134	23,606
4	481	65.9	12.9	\$ 632	\$ 16,108,911	25,489
5	438	69.5	12.8	\$ 632	\$ 15,713,521	24,863
6	368	70.6	11.8	\$ 632	\$ 13,674,076	21,636
7	212	90.4	12.0	\$ 632	\$ 10,503,156	16,619
8	90	99.8	9.1	\$ 632	\$ 5,158,785	8,163
9	96	87.5	12.6	\$ 632	\$ 4,543,246	7,189
10	110	88.5	32.3	\$ 632	\$ 3,904,812	6,179
Total	4207	66.8			\$ 114,429,663	181,060

Note: These savings are conservative as it includes only those Service Recipients reported by cohort. Further it does not include Service Recipients who have exited the program and are no longer in ACT in 2006-07.

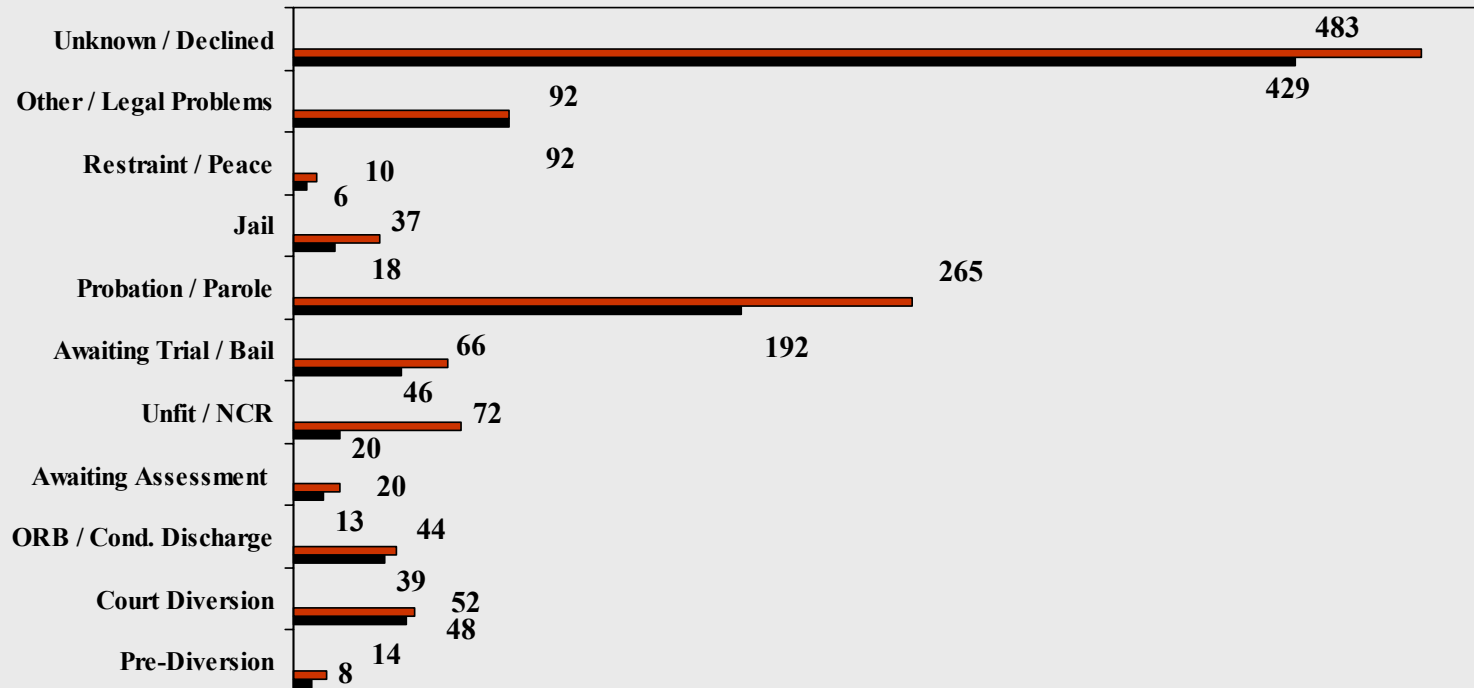
Percentage of Provincial ACT Caseload that Used Zero Hospital Days in 2006-07



2990 (66%) out of 4525 ACT clients had zero hospital days

Pre-Post Criminal Justice Status of ACT Clients

(As of March 31, 2007)



Pre-ACT = 599 of 4042 clients or 15% have criminal justice issues.

Post-ACT = 345 of 4096 clients or 8% have criminal justice issues.

No Legal Problems Baseline: 3443, Current: 3751

■ Baseline ■ Current

Thank You

*Ontario ACT teams for their
work in submitting this data and
making the report possible*